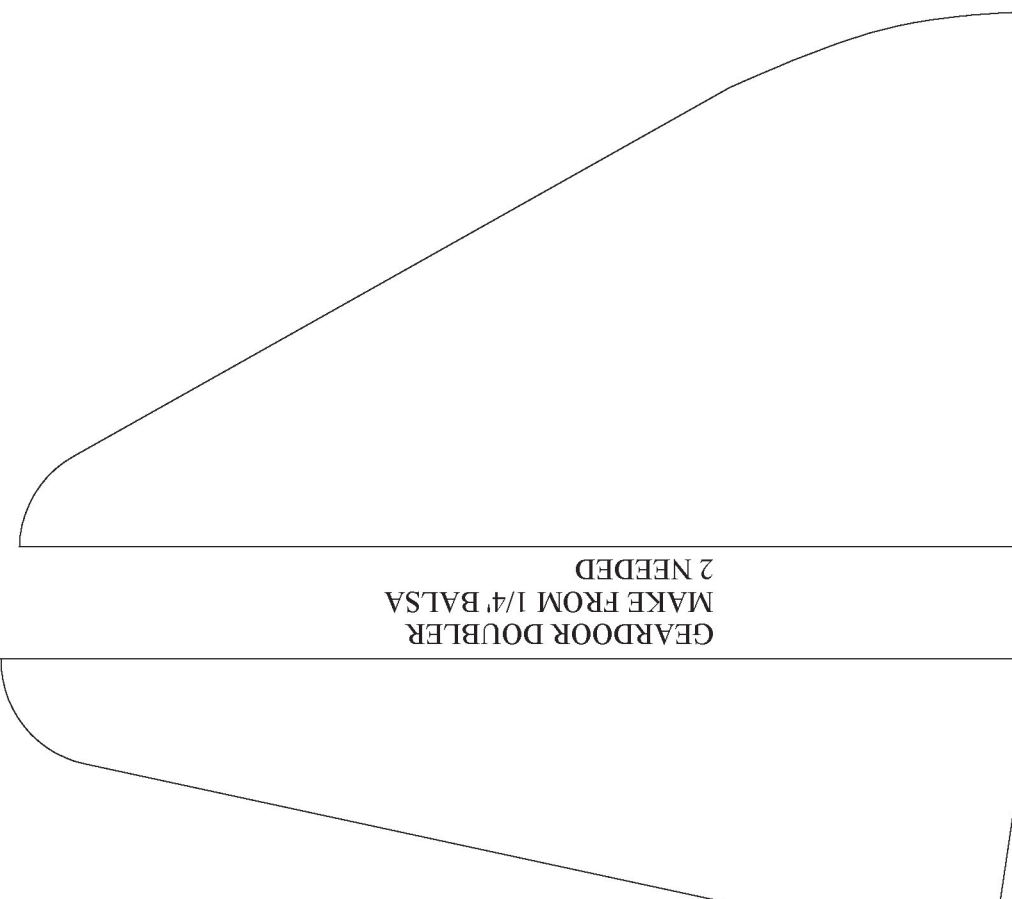


GEARDOOR DOUBLER  
MAKE FROM 1/4" Balsa  
2 NEEDED



BOTTOM  
TEMPLATE-  
CARDSTOCK

F-14 BOTTOM  
TEMPLATE-  
CARDSTOCK

GEAR DOOR- MAKE FROM  
2 LAMS OF 1/32" PLY - CROSS  
GRAIN

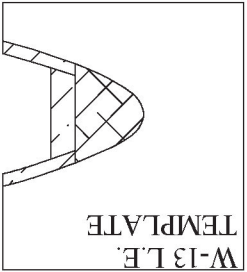
ATES

REAR DUCT TEMPLATE - CARDSTOCK

F-15  
TEN  
CAR

# TEMPLA

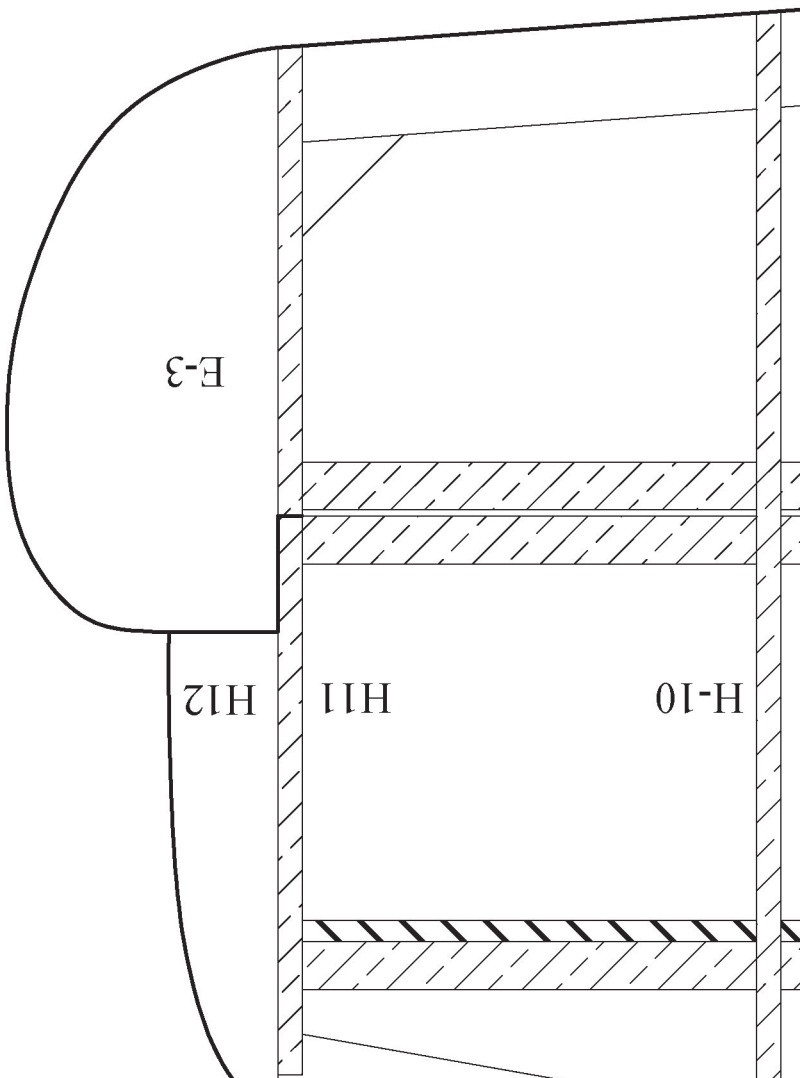
CARDSTOCK



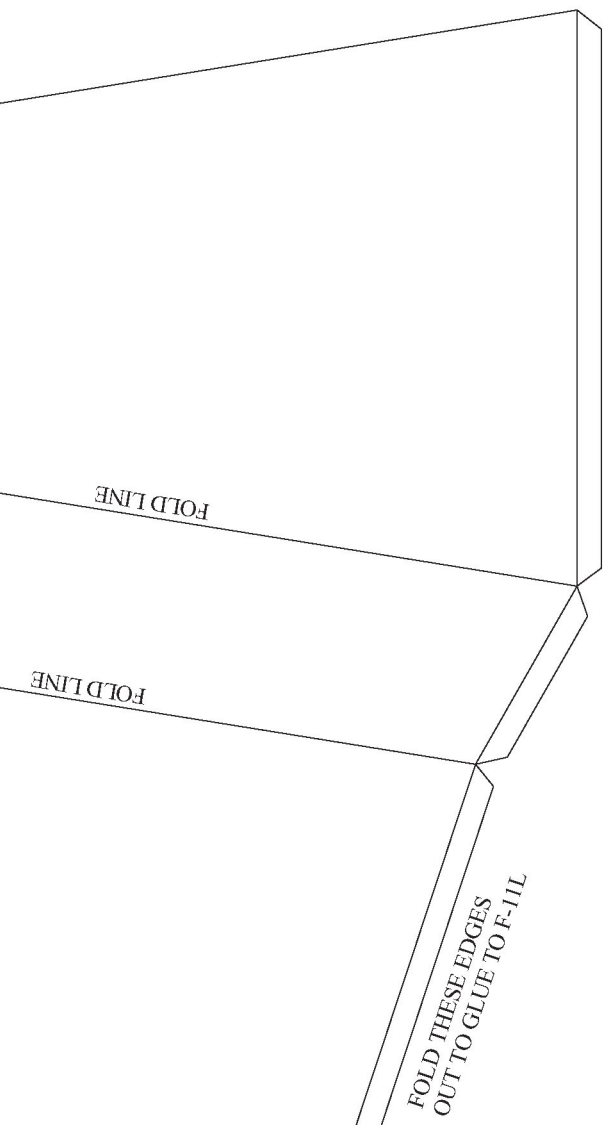
FOLD LINE

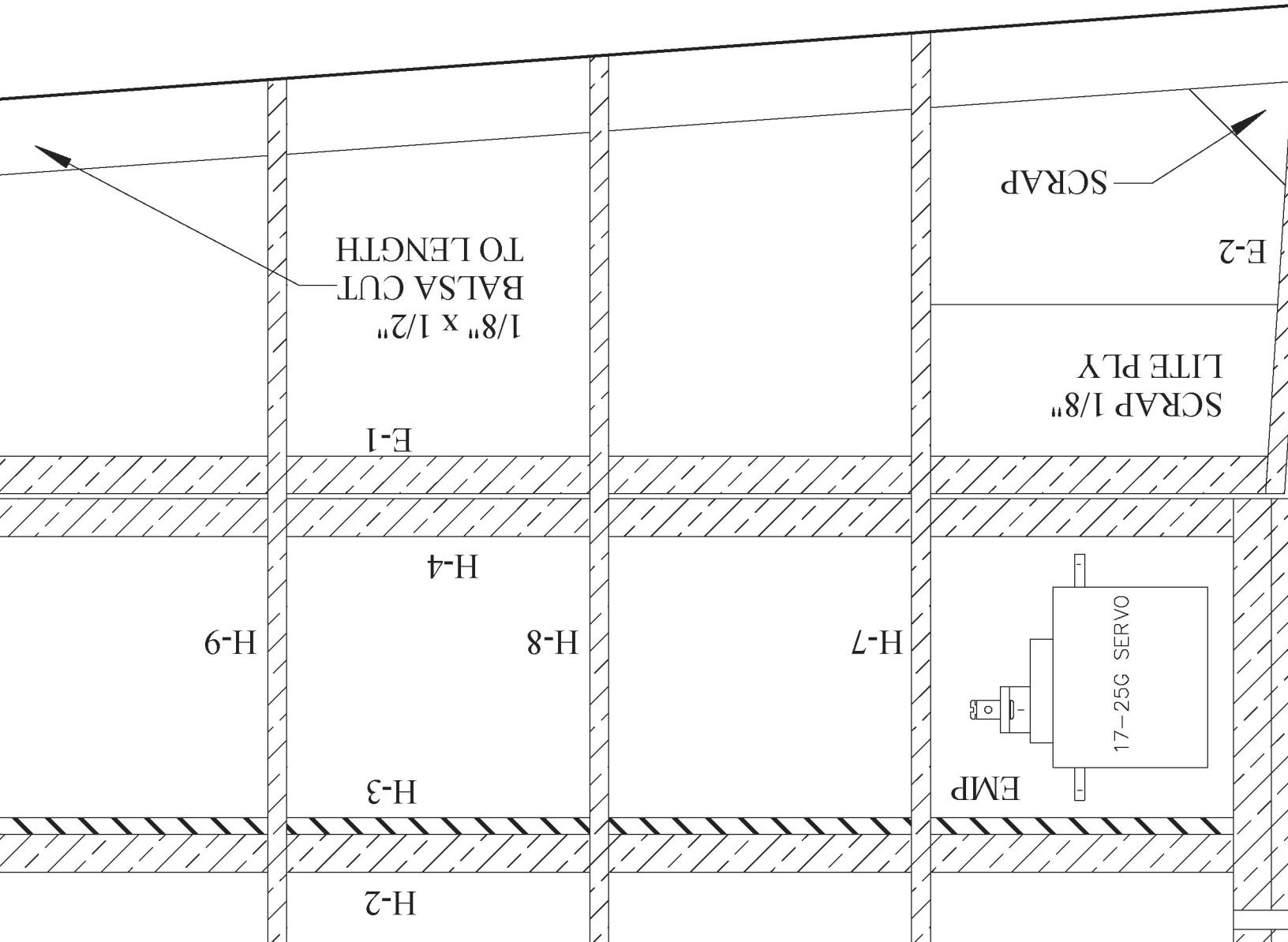
FOLD LINE

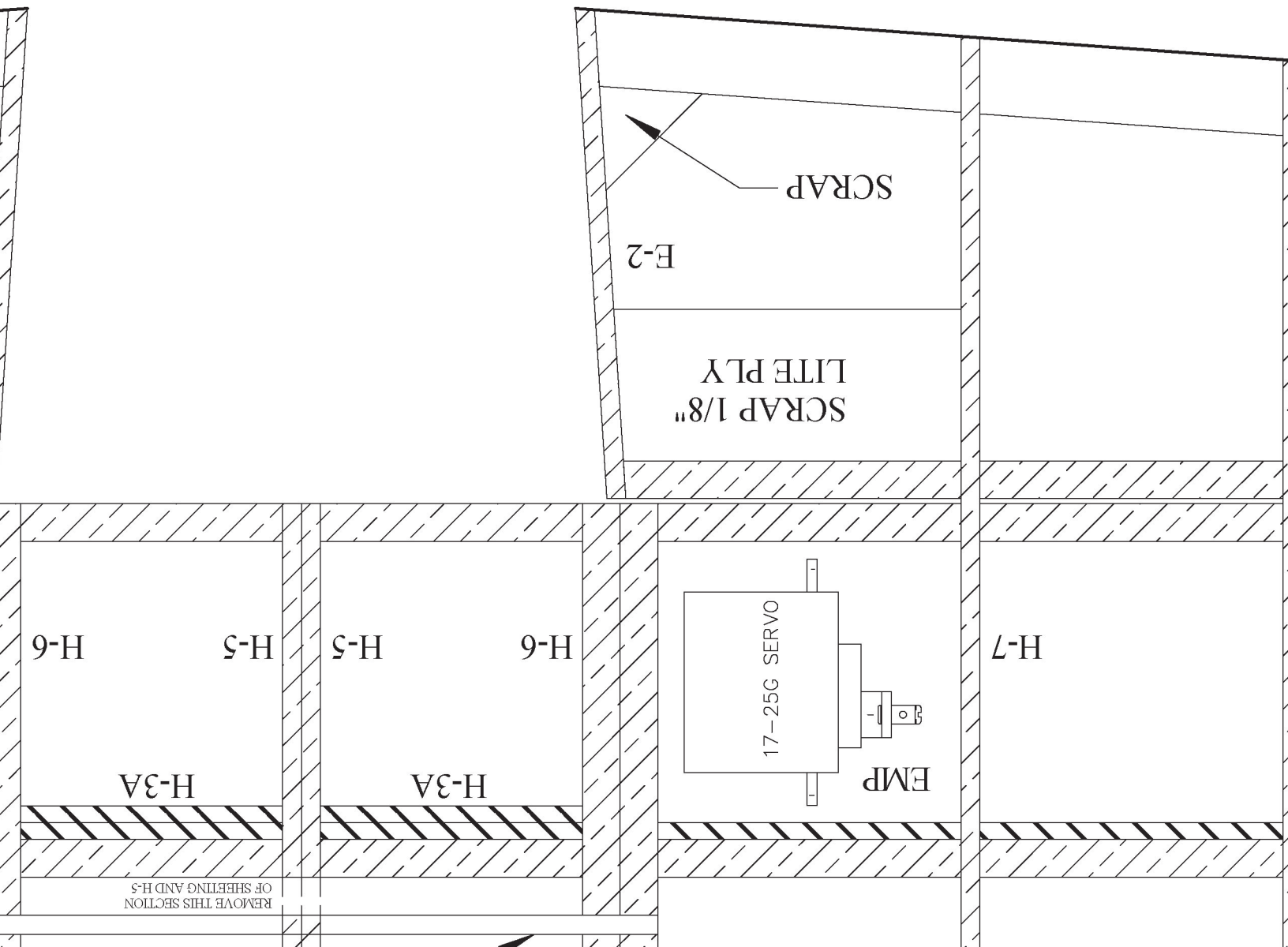
FOLD LINE

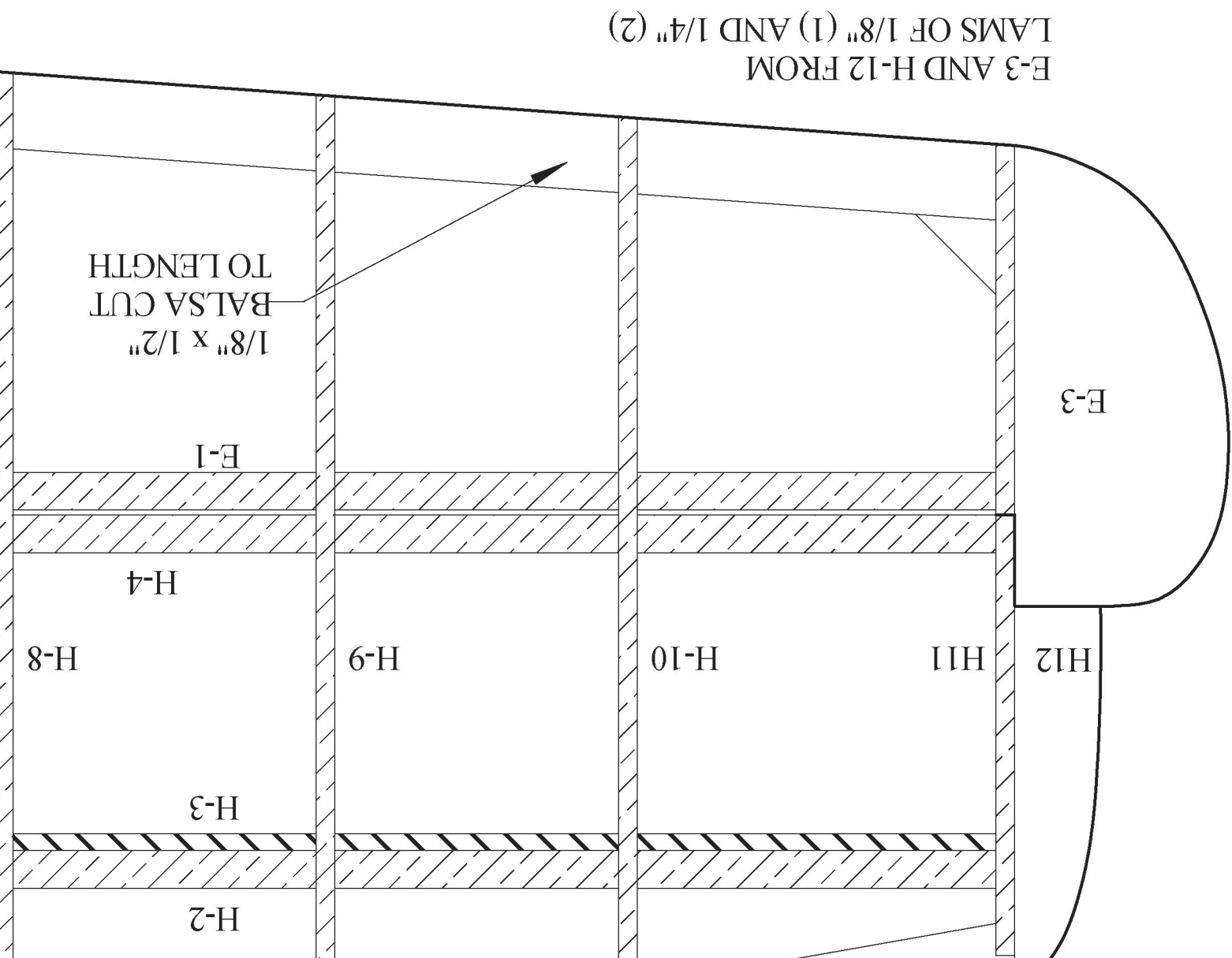


FRONT DUCT TEMPLATE-



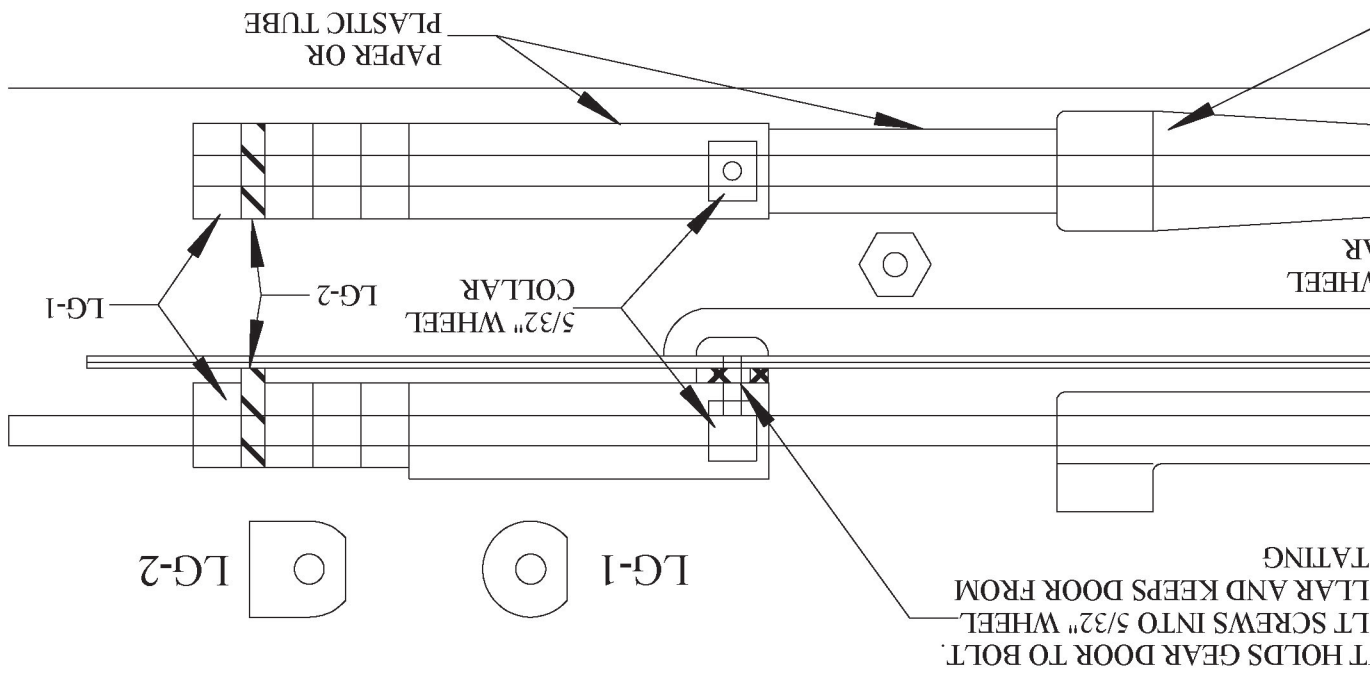






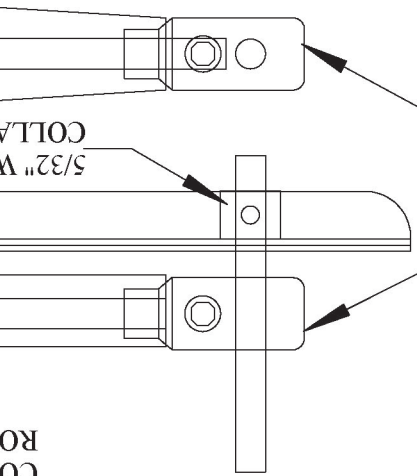
E-3 AND H-12 FROM  
LAMPS OF 1/8" (1) AND 1/4" (2)

# R AND DOOR DETAIL



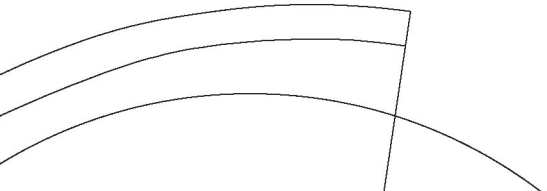
GEA

STRUT DETAIL- BOTTOM IS  
1/8" AND SIDES/CENTER-  
FILL IS 1/4" BALSA



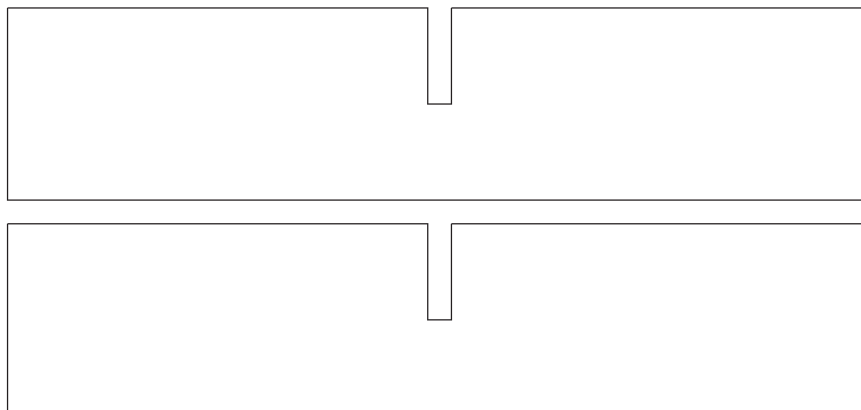
NU  
BO  
CO  
RO

DUBRO E/Z ADJUST  
AXLE- 5/32" DIA.  
PART NO. DUB615



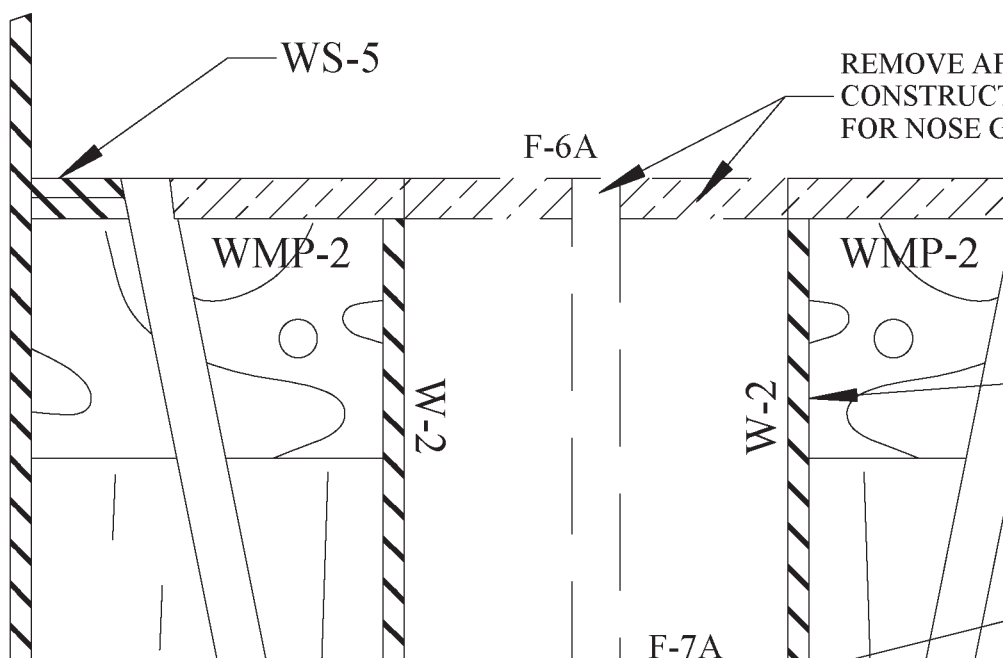
W-SCRAP  
BALSA  
VE AFTER  
RDUCTION

CW SPACERS-FROM 1/8" BALSA SCRAP



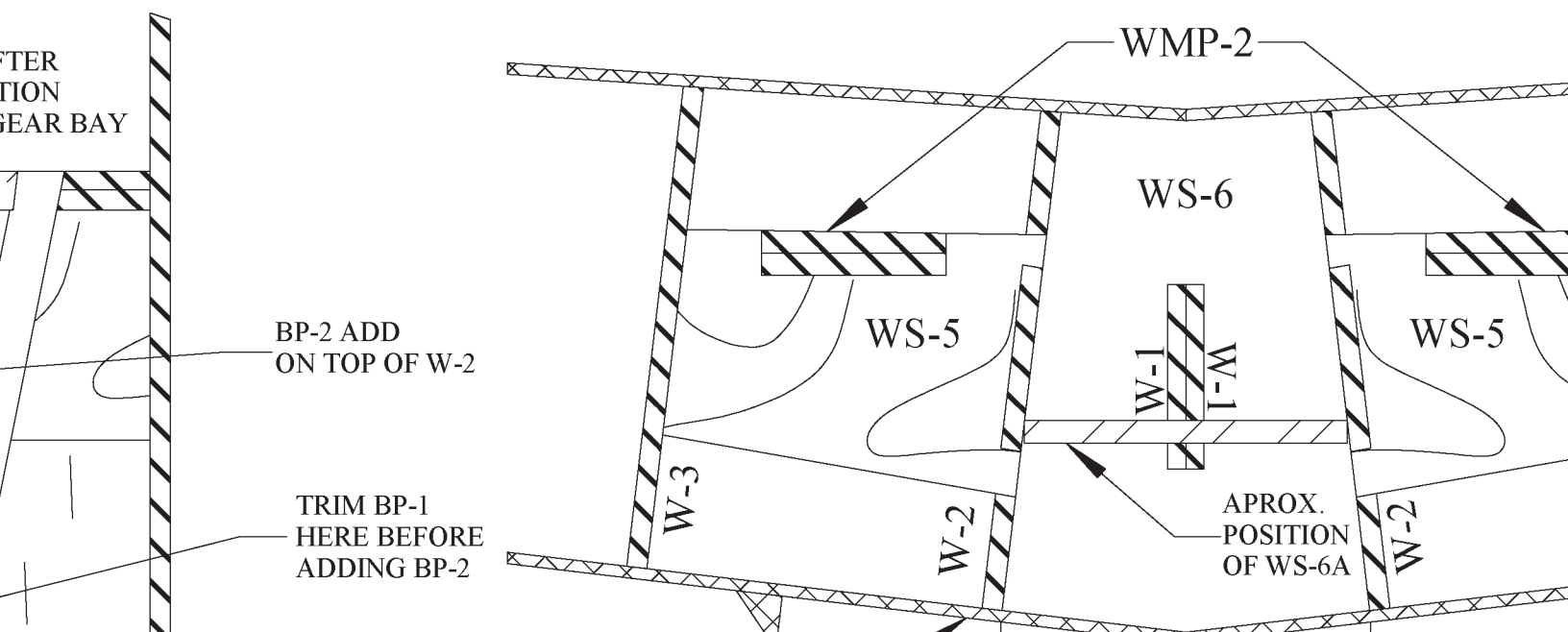
# BELLY-PAN DETAILS

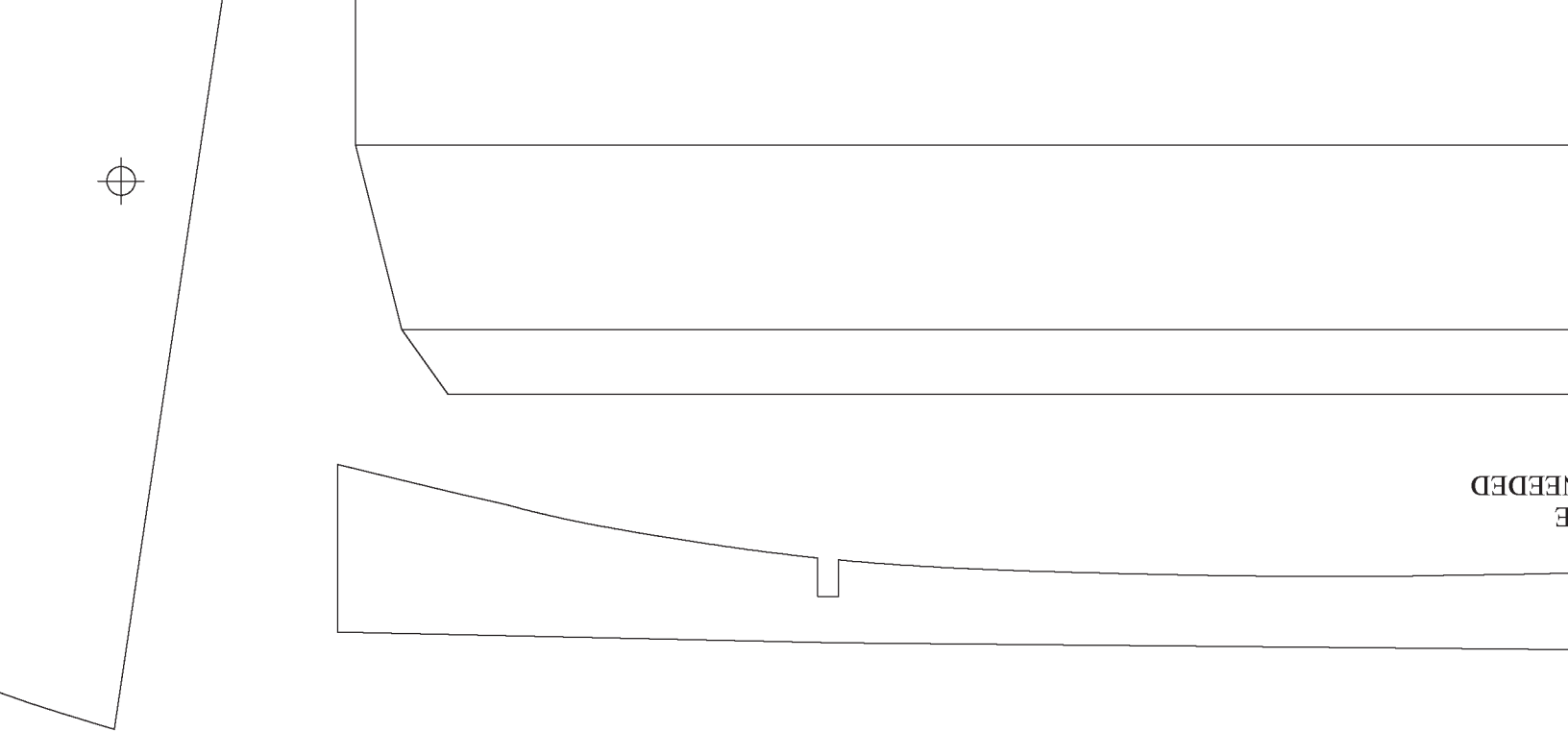
BUILD AFTER WING



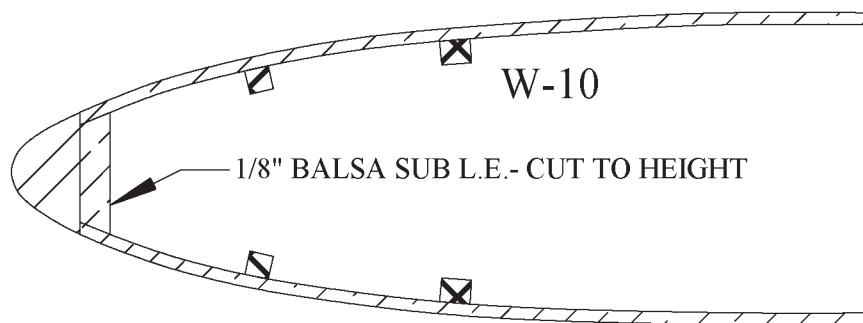
## WATER TATION GEAR BAY

## FRONT DETAIL

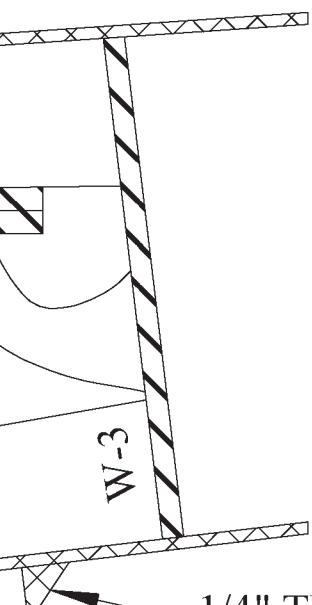




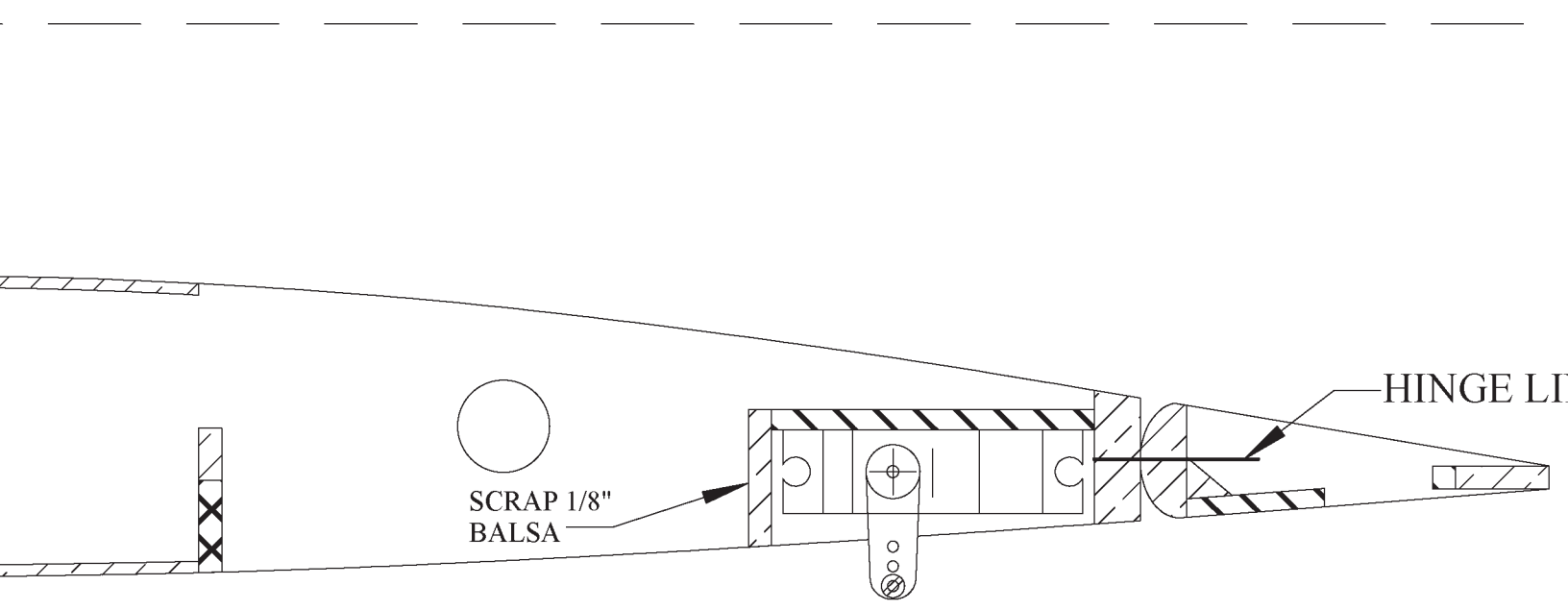
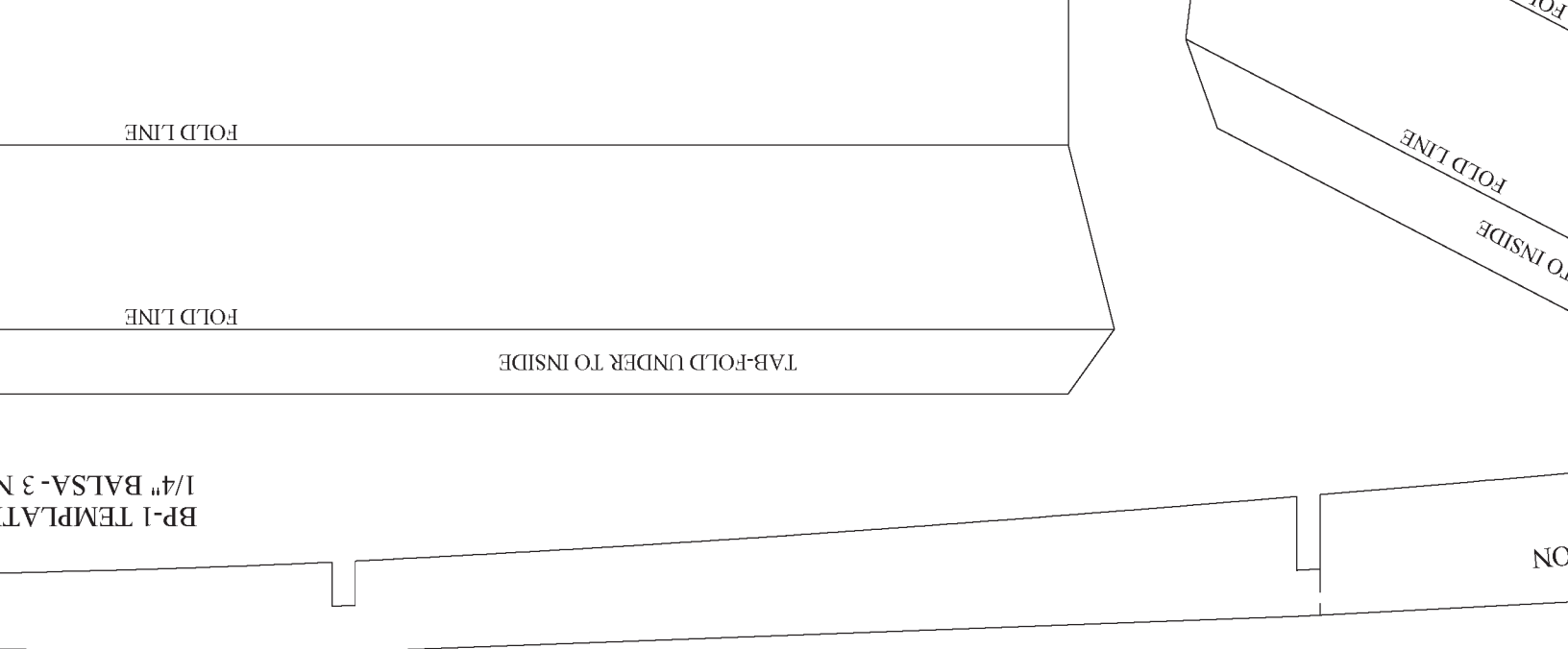
PLATE



AILERON

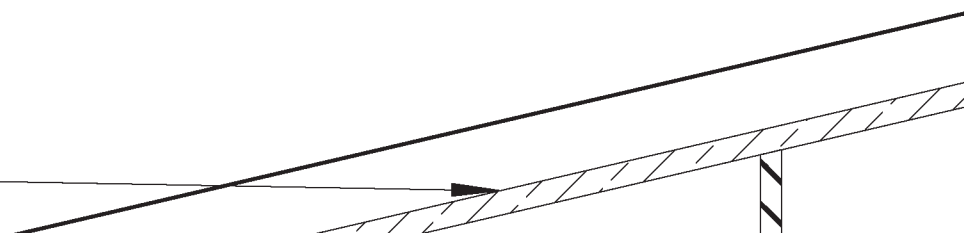


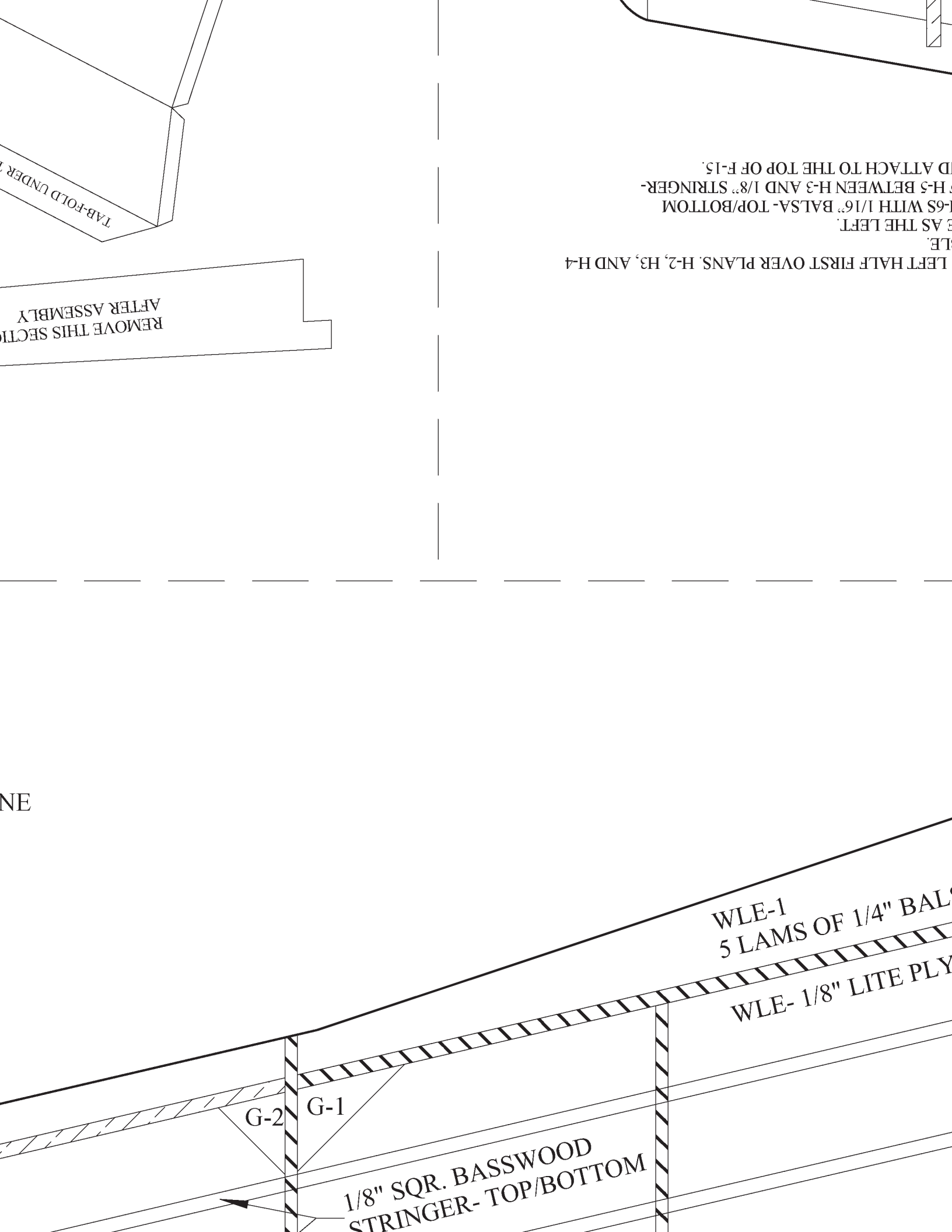
SUB LEAD  
CUT TO L



# N DETAIL

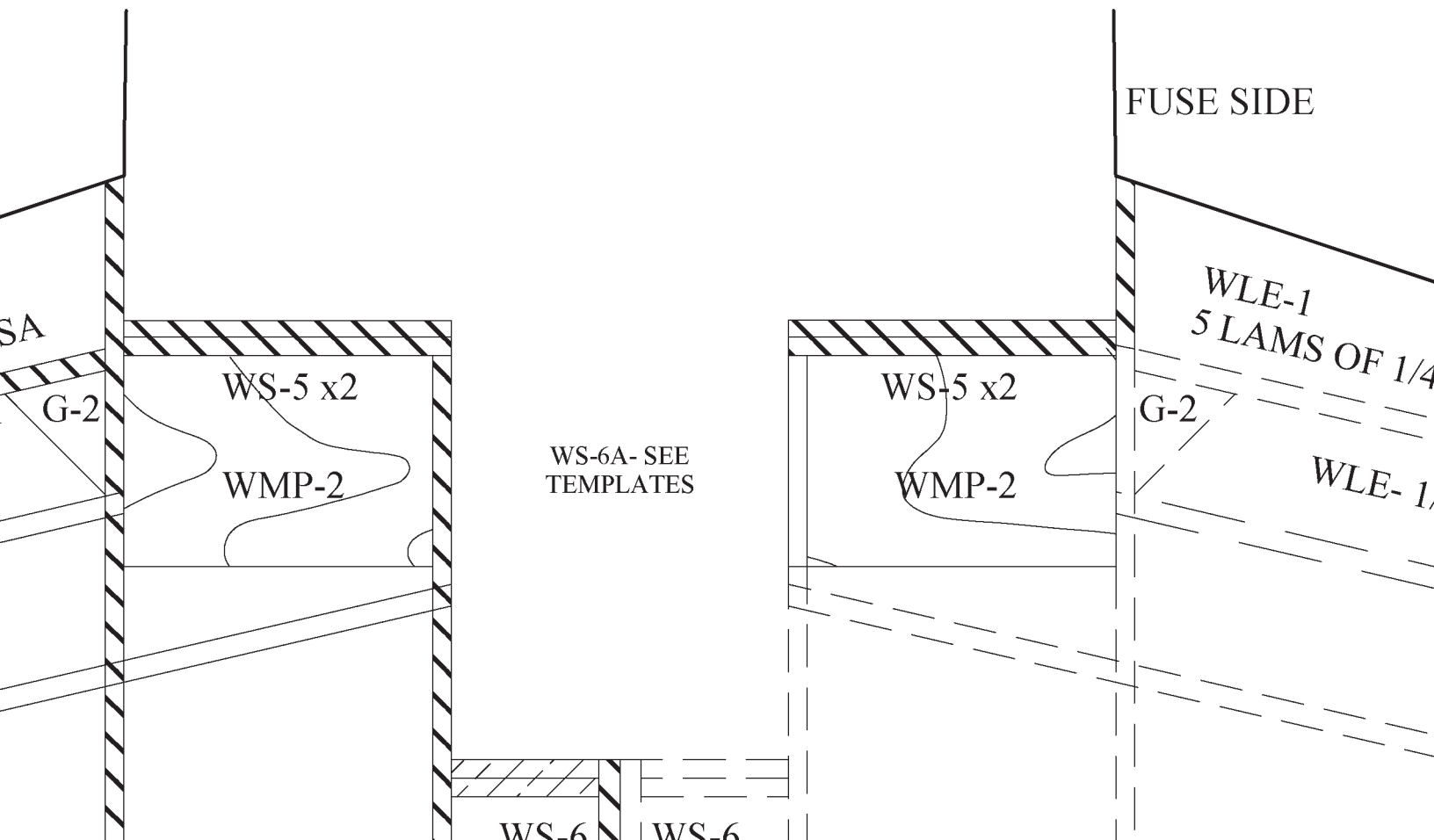
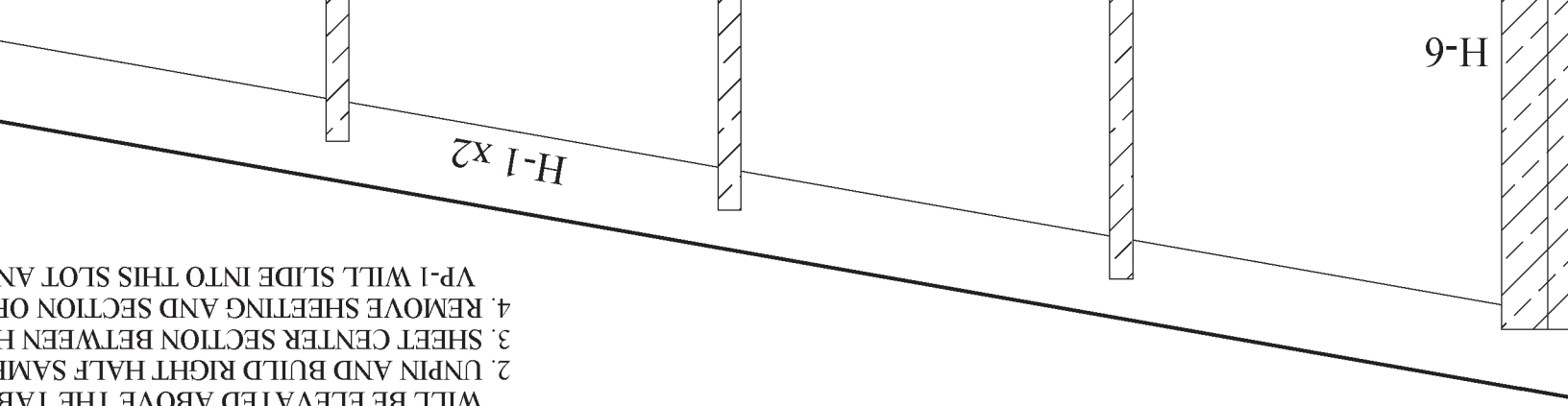
ING EDGE- 1/8" BALSA  
LENGTH AND HEIGHT

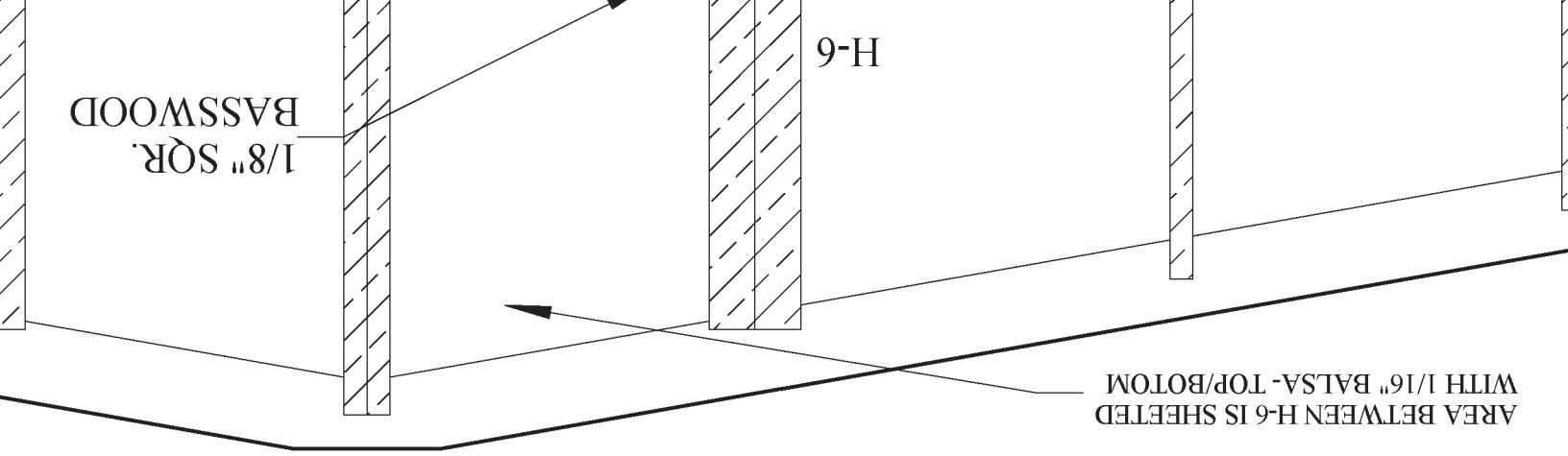




# LD FIRST

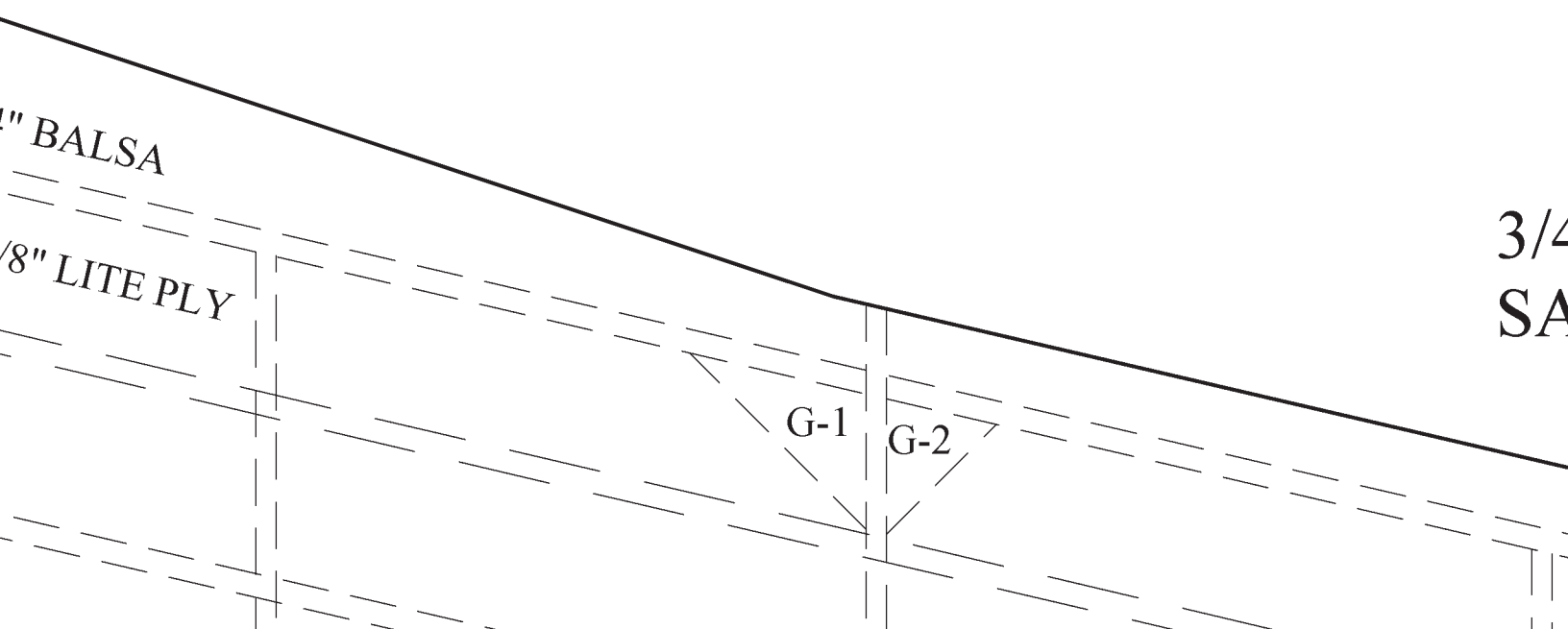
- HORIZONTAL
1. HORIZONTAL HAS DIHEDRAL - BUILD WILL BE ELEVATED ABOVE THE TAB
  2. UNPIN AND BUILD RIGHT HALF SAME
  3. SHEET CENTER SECTION BETWEEN H
  4. REMOVE SHEETING AND SECTION OF VP-1 WILL SLIDE INTO THIS SLOT AND

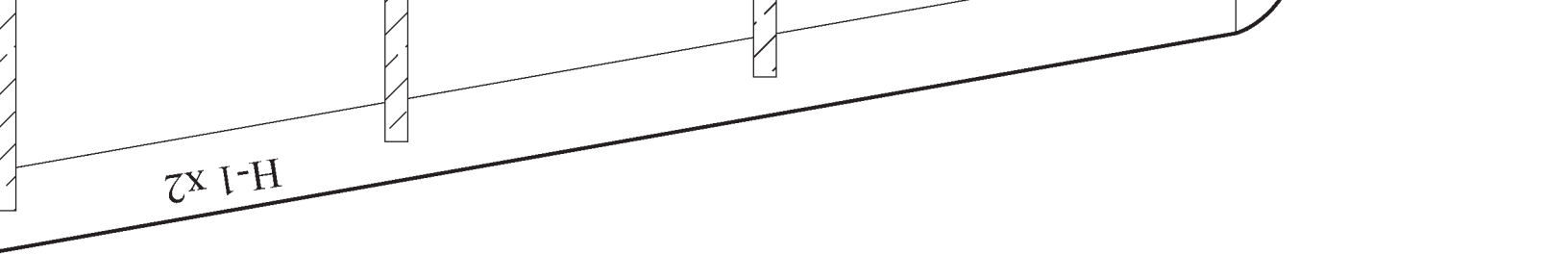




# HORIZONTAL-BUL

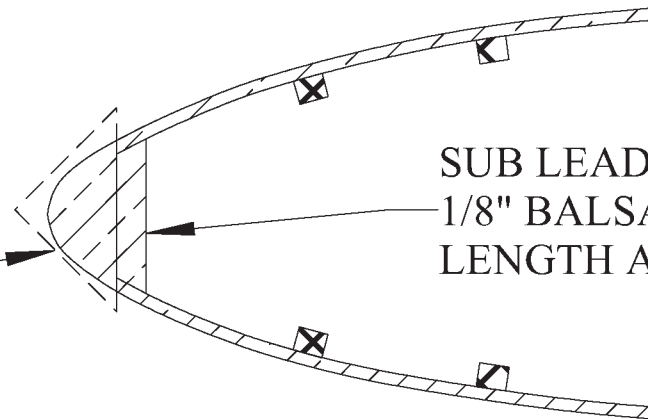
## PLAN CAN



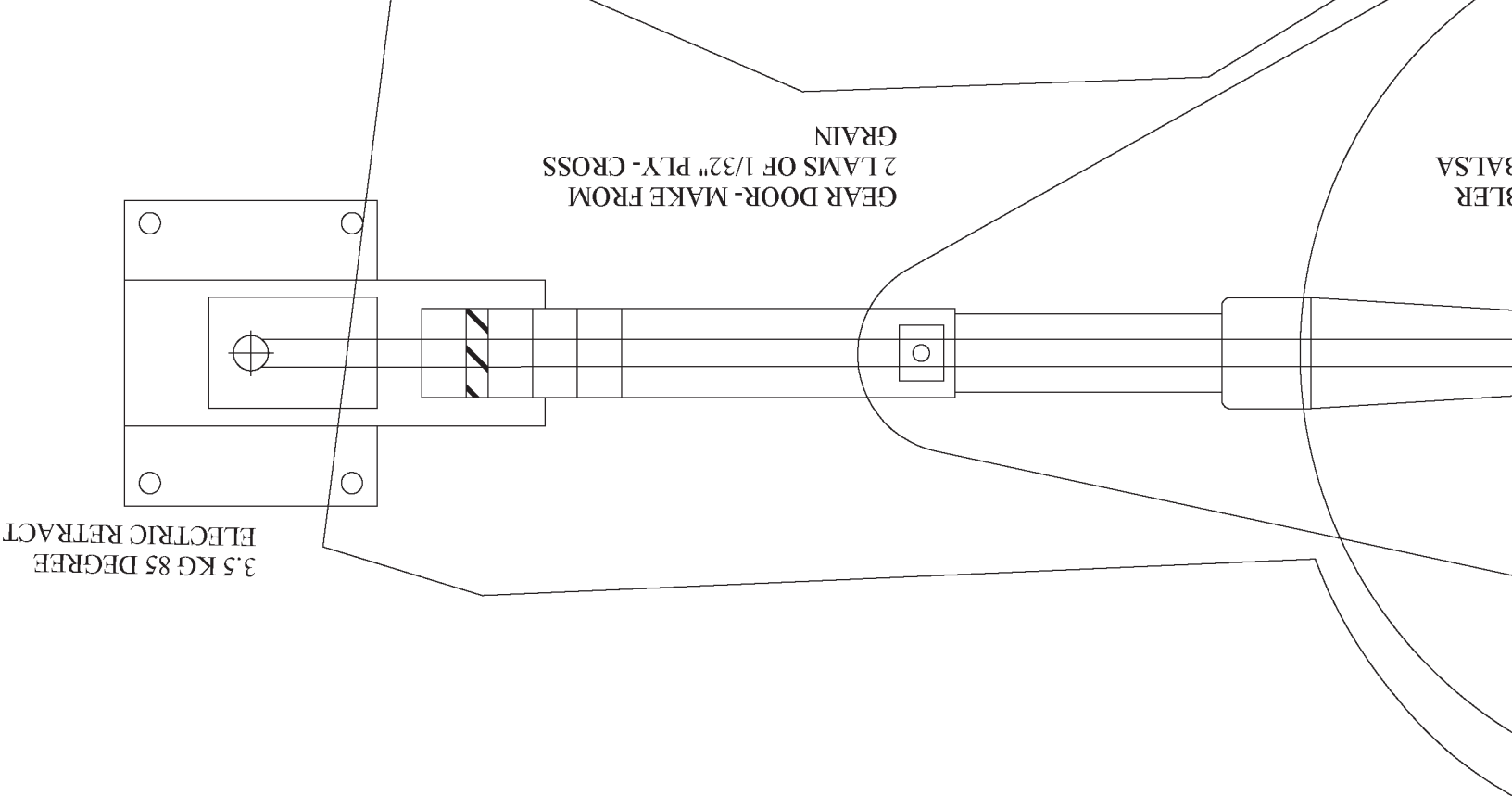


N BE TRIMMED ON THIS

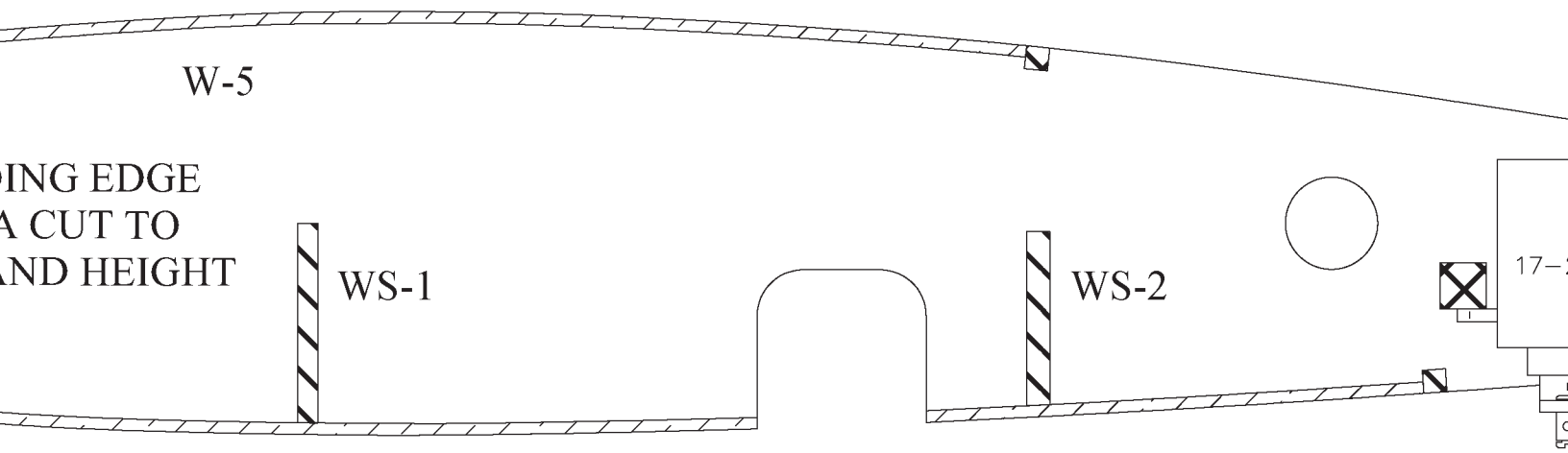
4" TRIANGLE STOCK  
ANDED TO SHAPE



SUB LEADING EDGE- 1/8" BALS  
CUT TO LENGTH AND HEIGHT

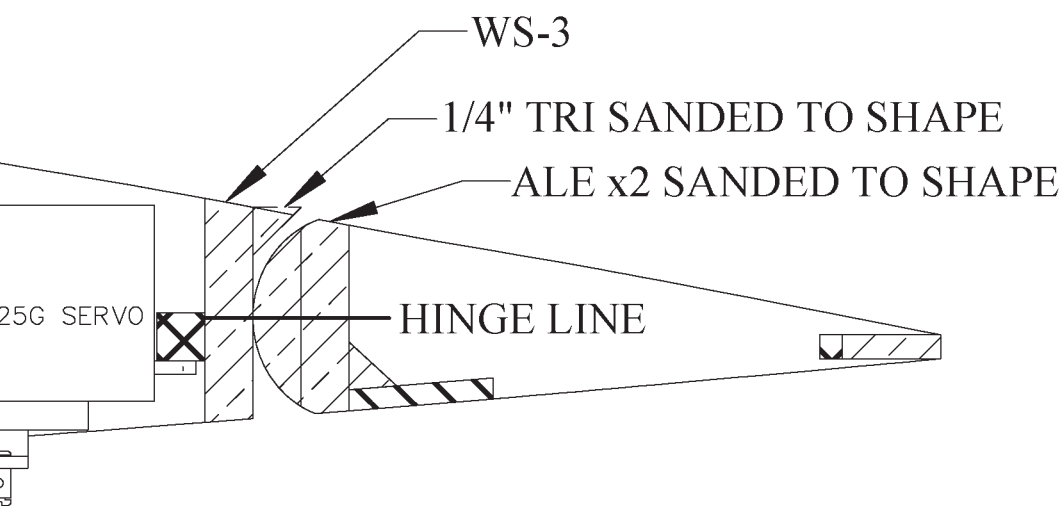
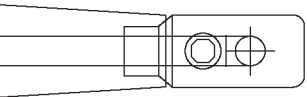


LINE



FI

GEARDOOR DOUBLE  
MAKE FROM 1/4" E



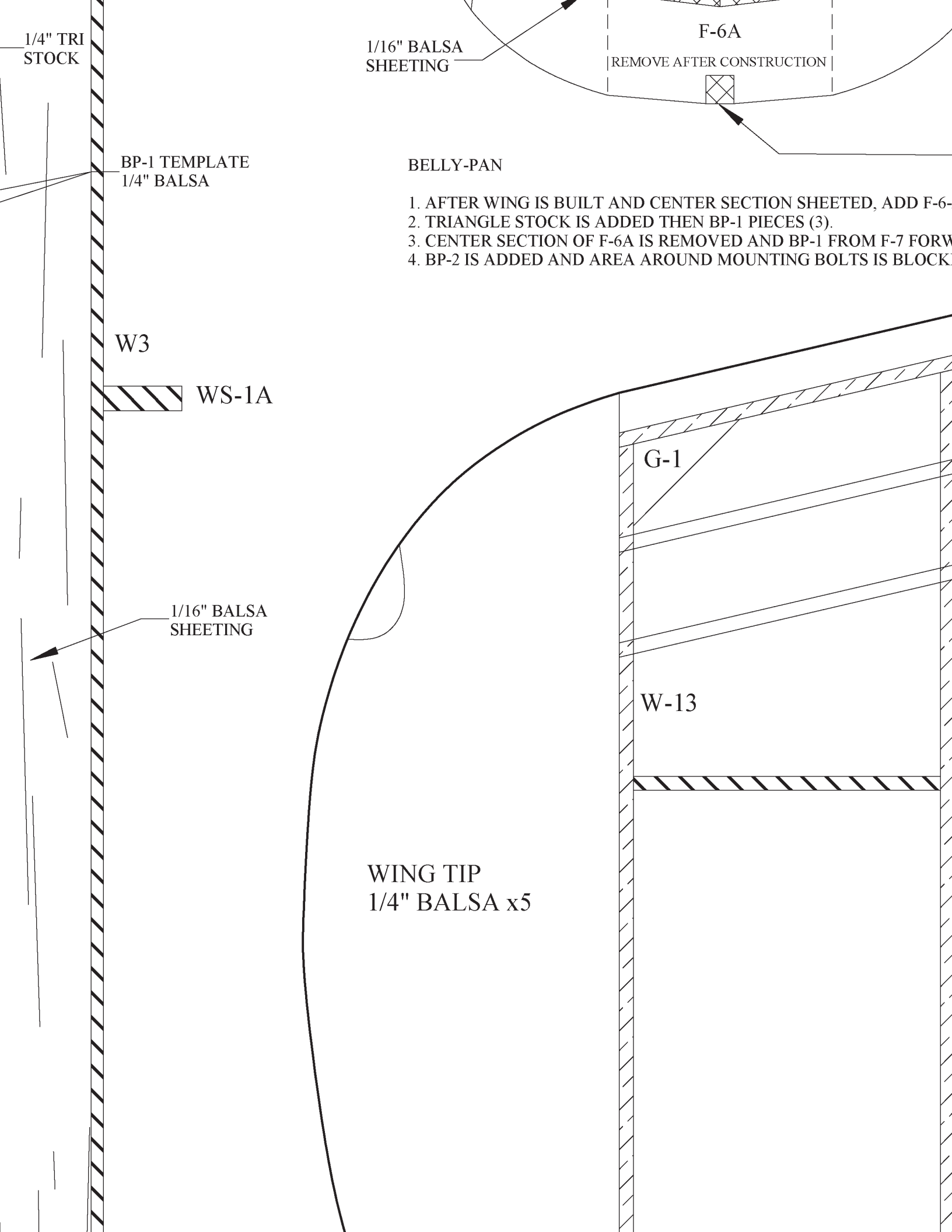
LAP DETAIL

1/4" TRI  
STOCK

W-1

F-8B

F-2A



1/4" TRI STOCK

BP-1

A TO F-10A

WARD  
ED IN.

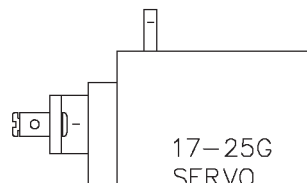
3/4" TRIANGLE STOCK

W-11

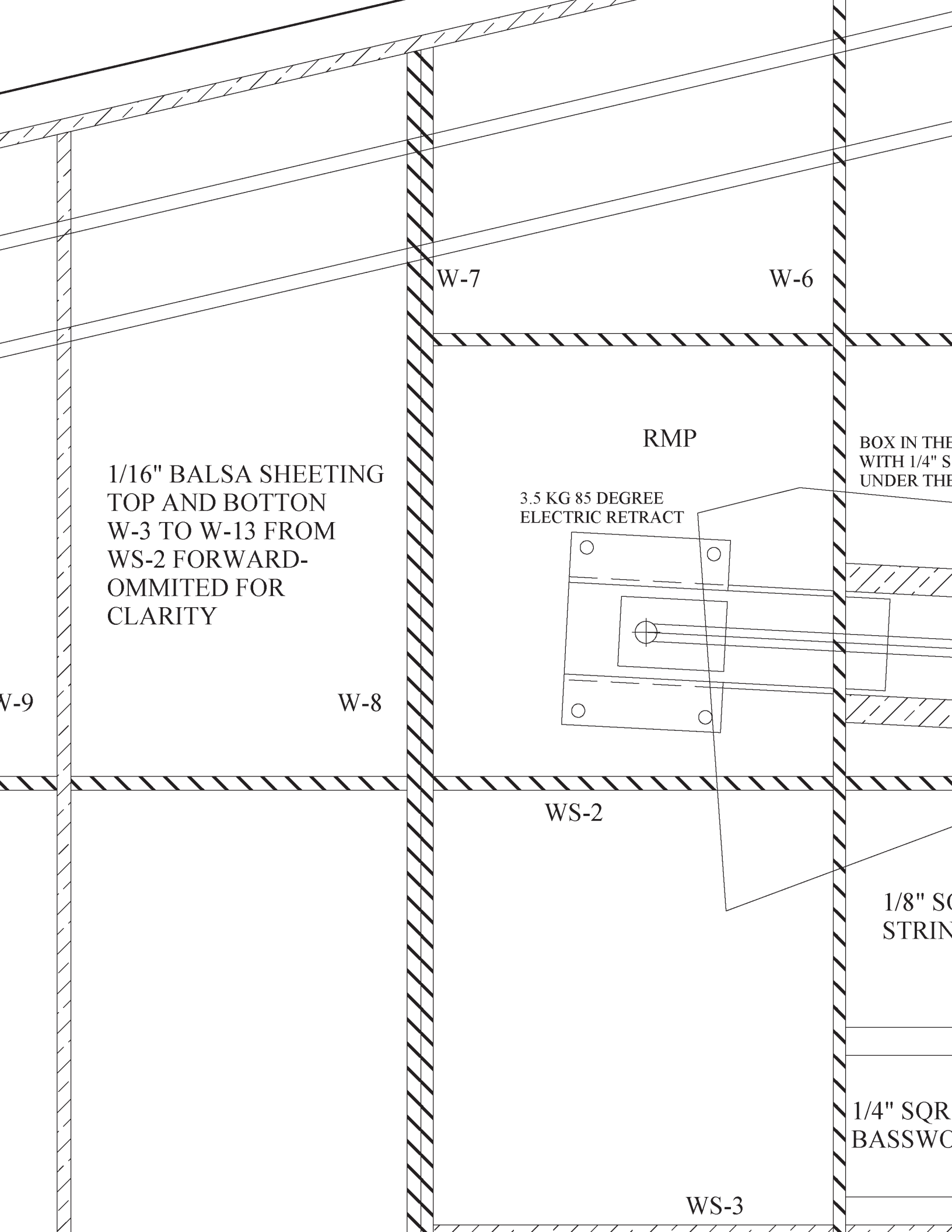
W-10

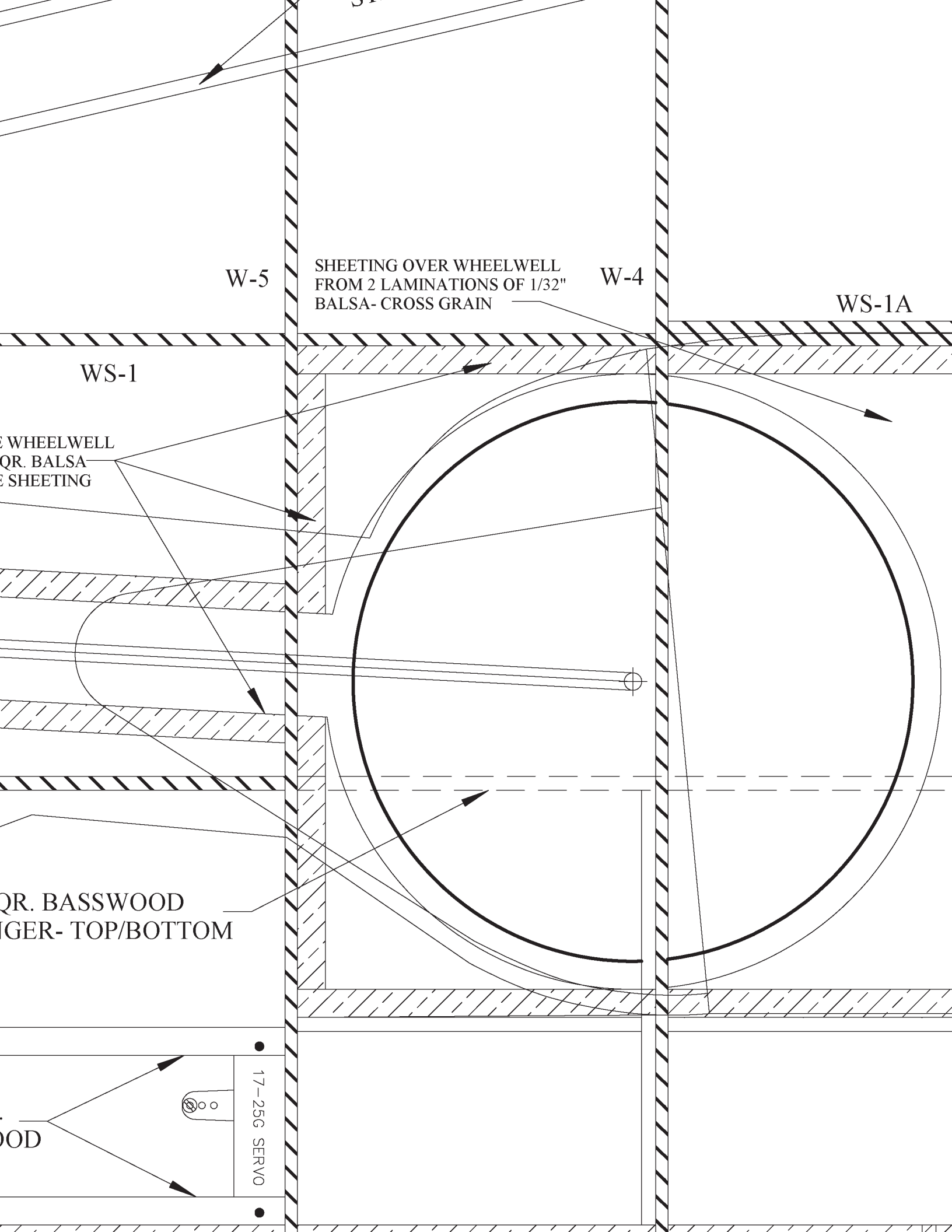
BOX IN SERVO BAY  
WITH 1/8" BALSA SCRAP

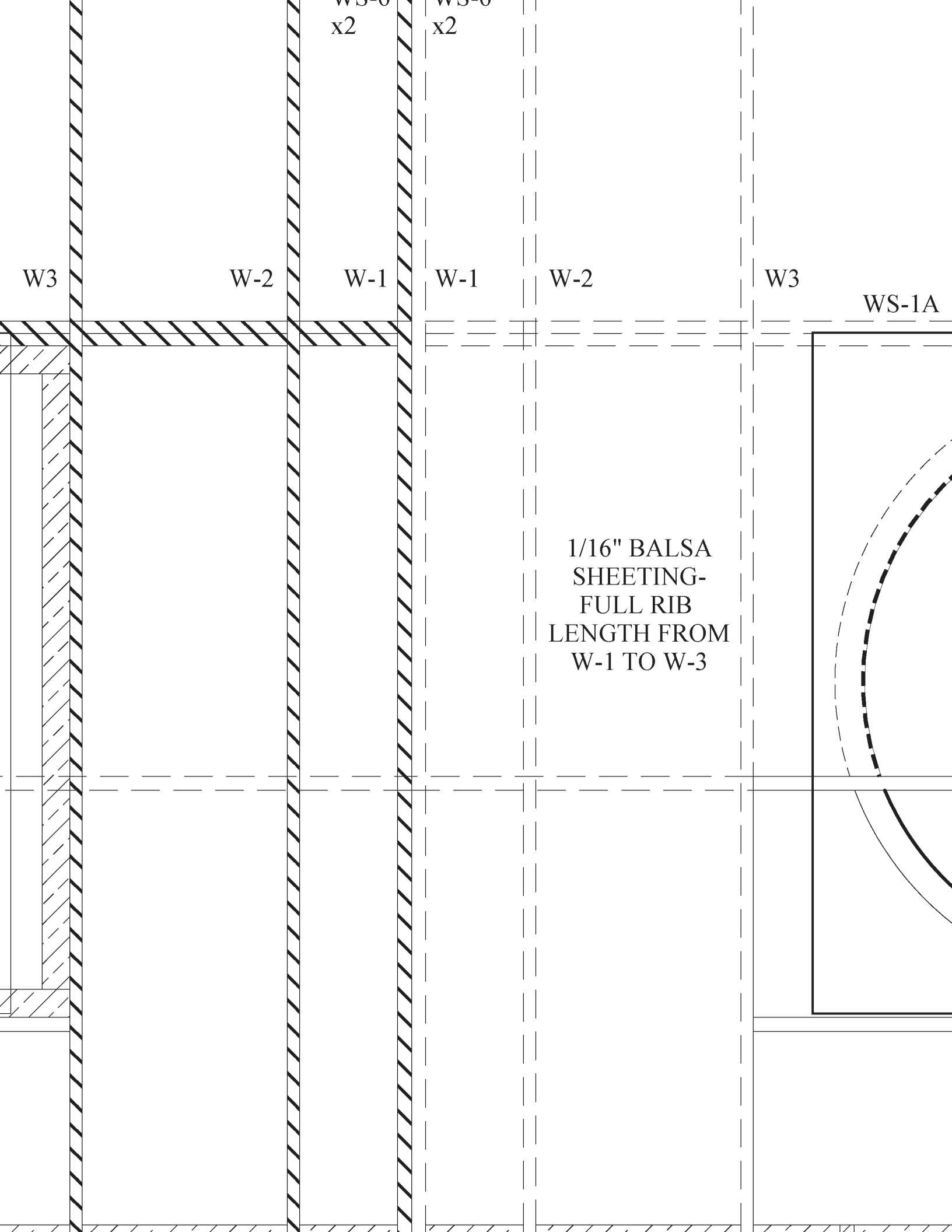
AILERON  
MOUNTING



17-25G  
SERVO







WS-1A  
x2

WS-1A  
x2

W-3

W-2

W-1

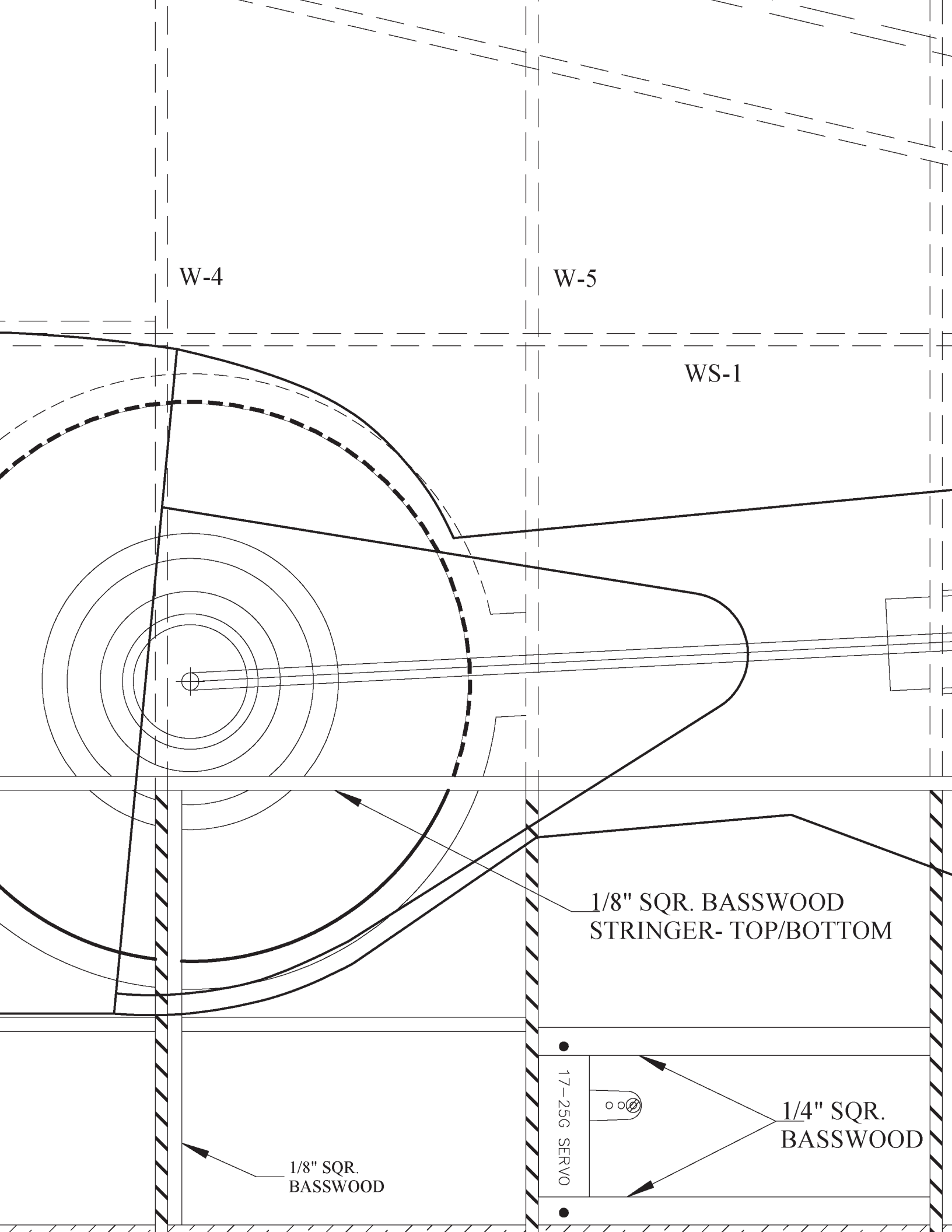
W-1

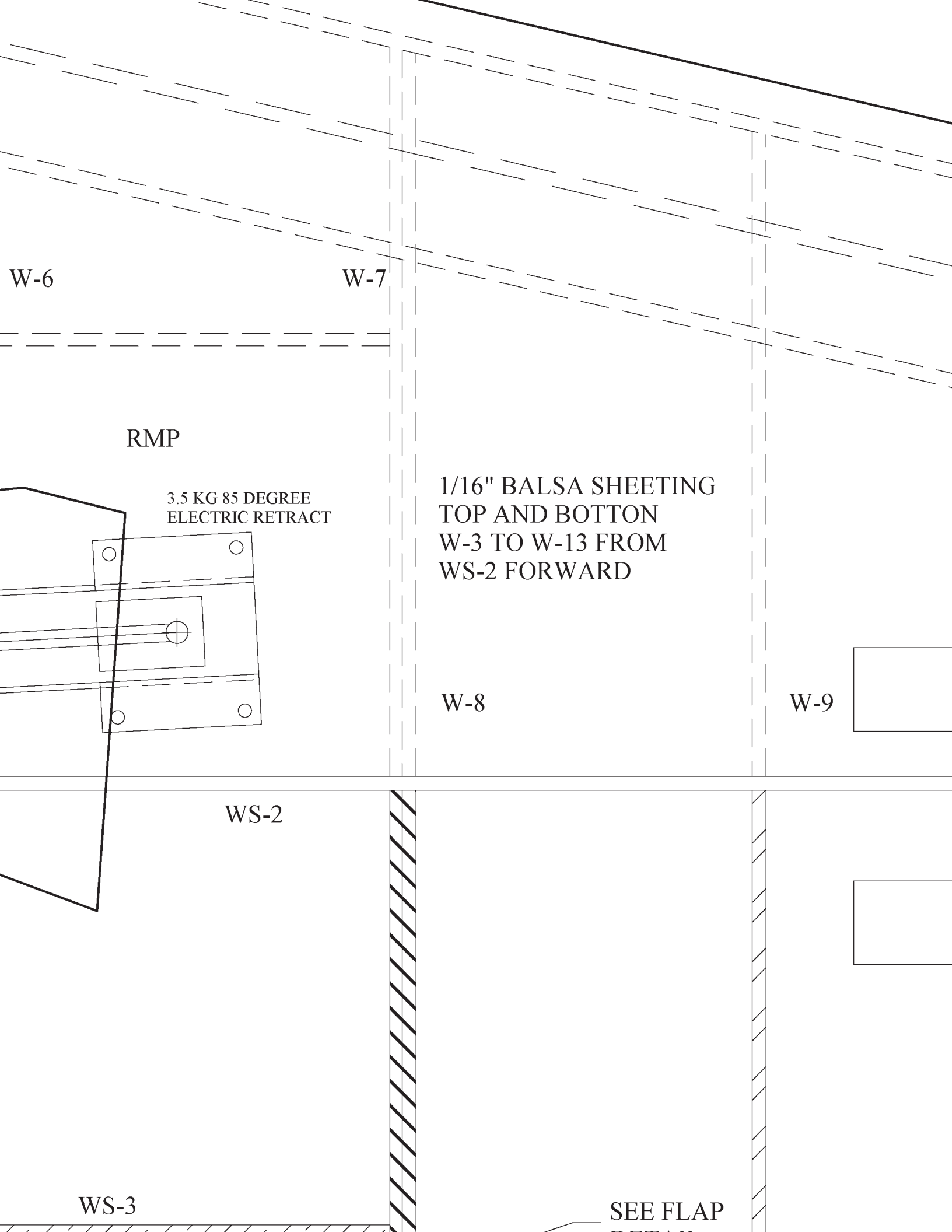
W-2

W-3

WS-1A

1/16" Balsa  
SHEETING-  
FULL RIB  
LENGTH FROM  
W-1 TO W-3





W-6

W-7

RMP

3.5 KG 85 DEGREE  
ELECTRIC RETRACT

1/16" BALSA SHEETING  
TOP AND BOTTON  
W-3 TO W-13 FROM  
WS-2 FORWARD

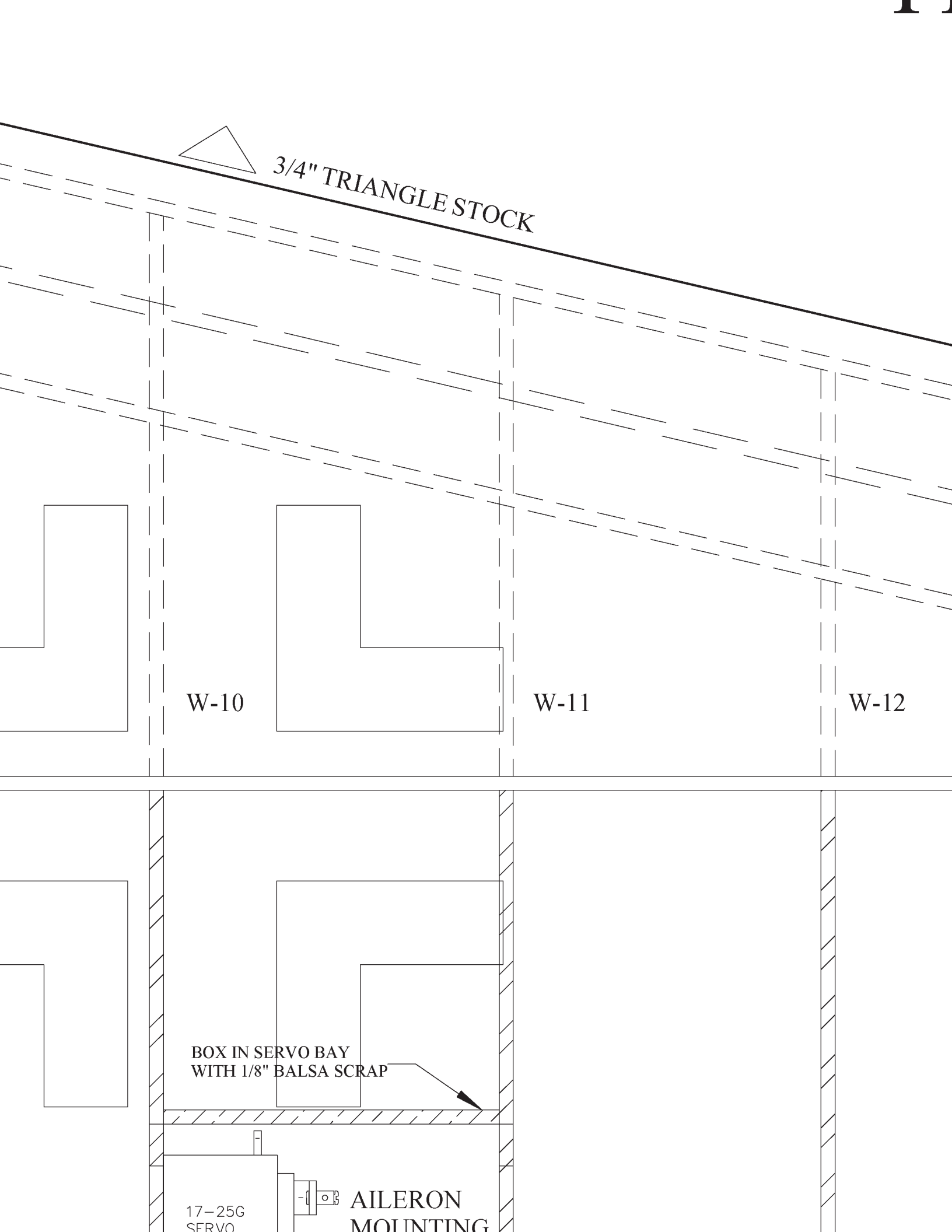
W-8

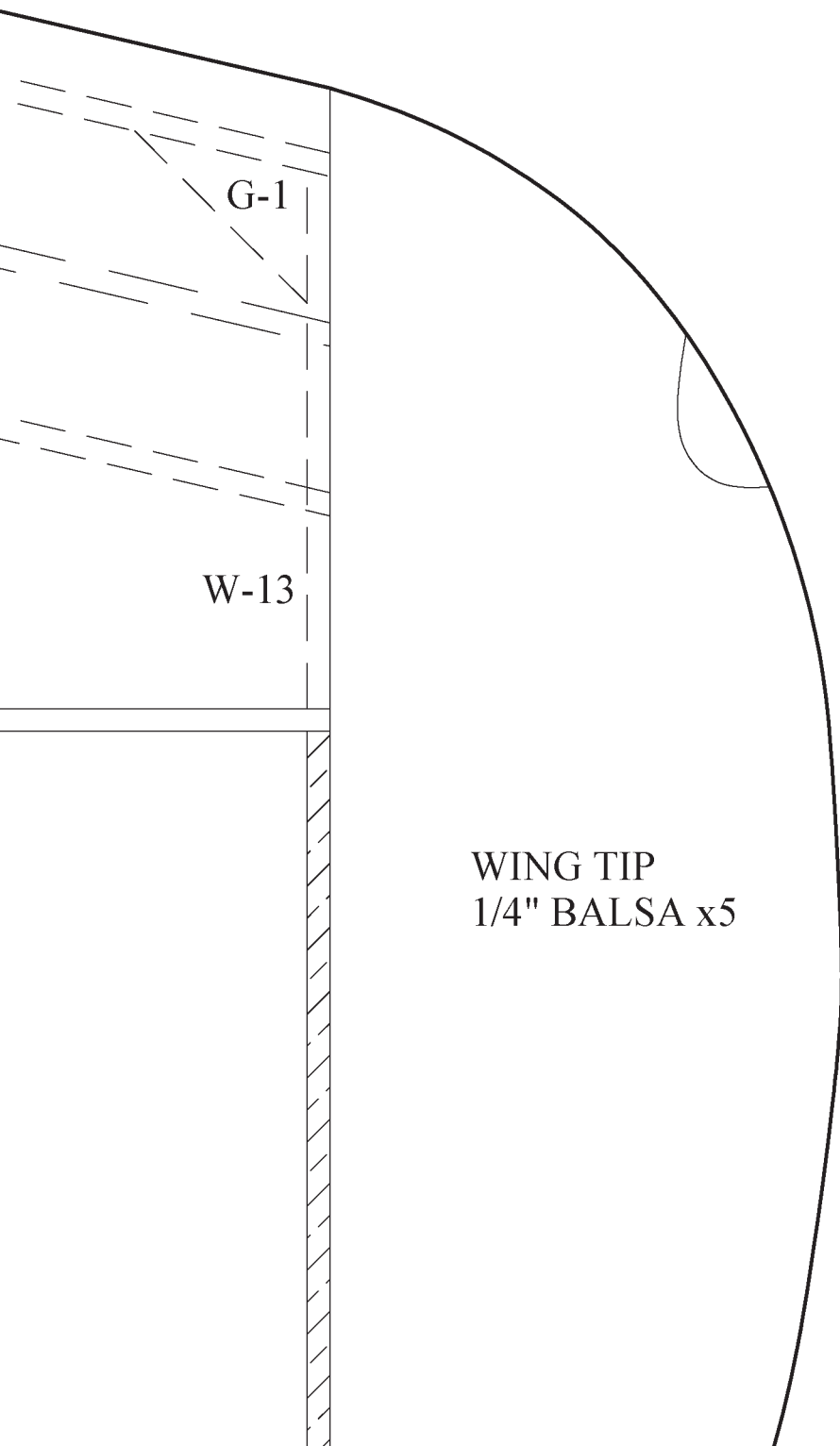
W-9

WS-2

WS-3

SEE FLAP  
DETAIL

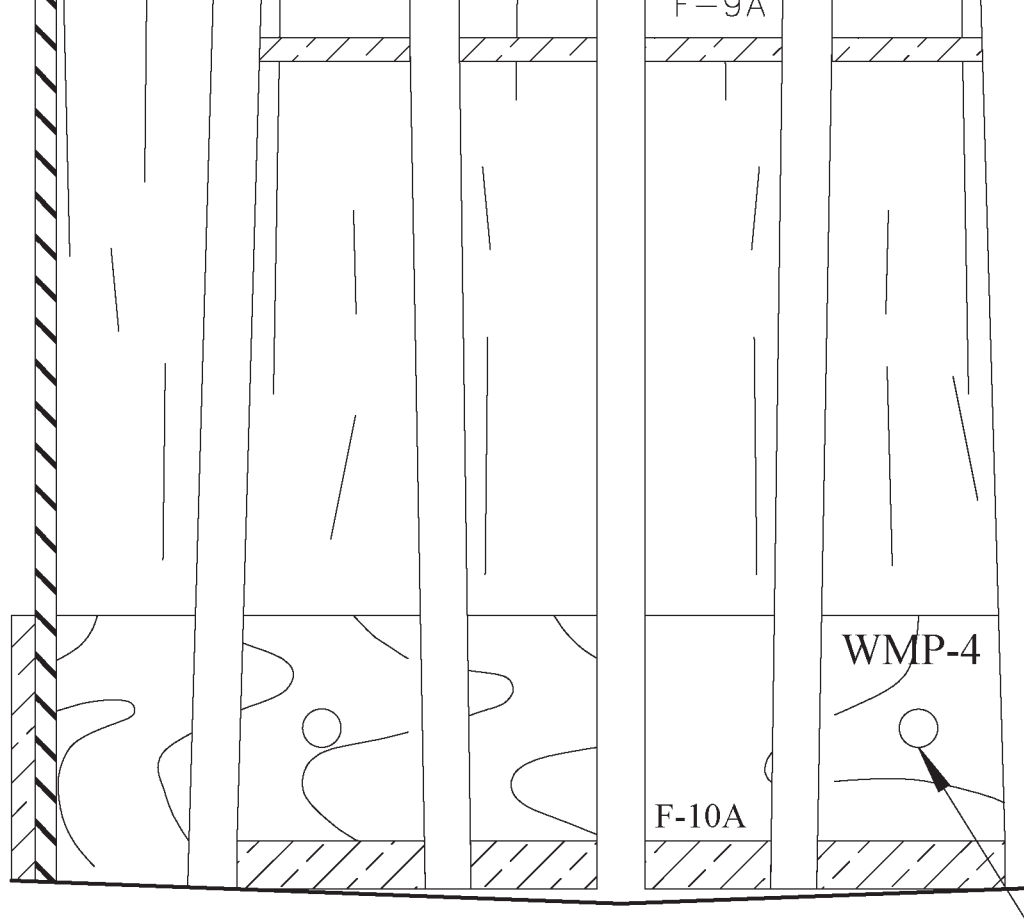


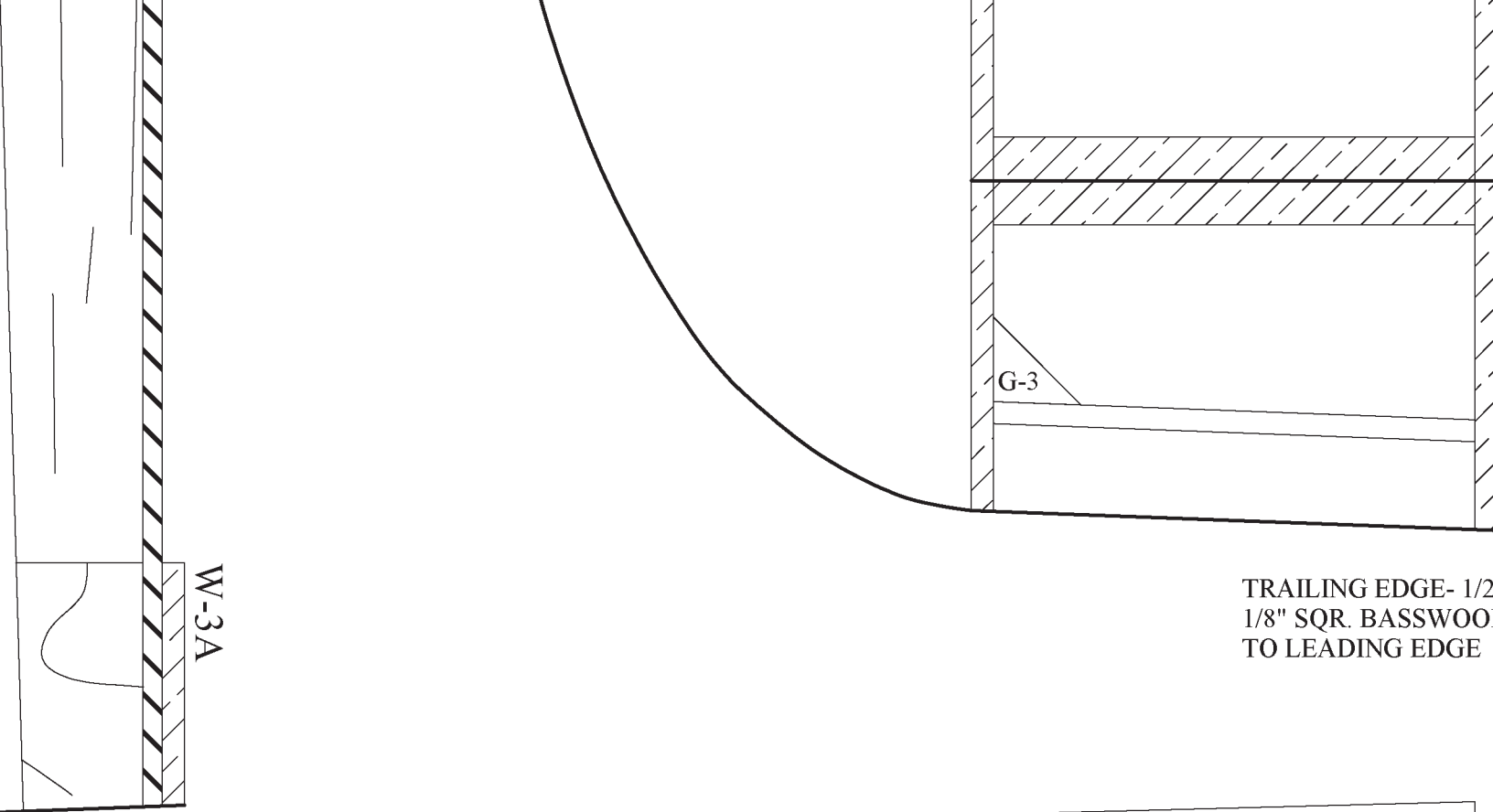


G-1

W-13

WING TIP  
1/4" BALSA x5





W-3A

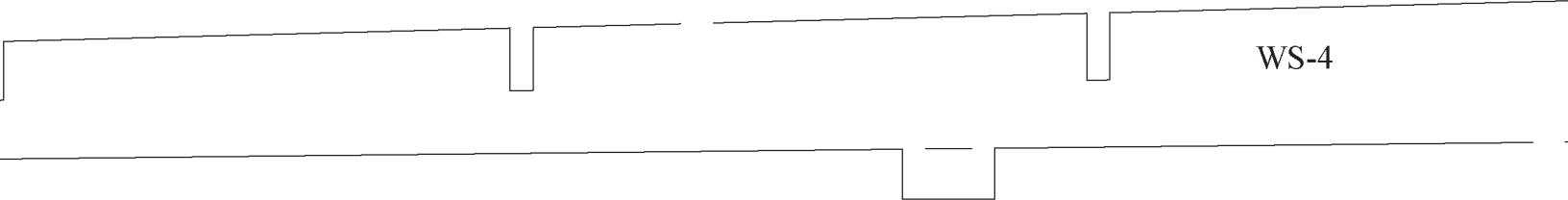
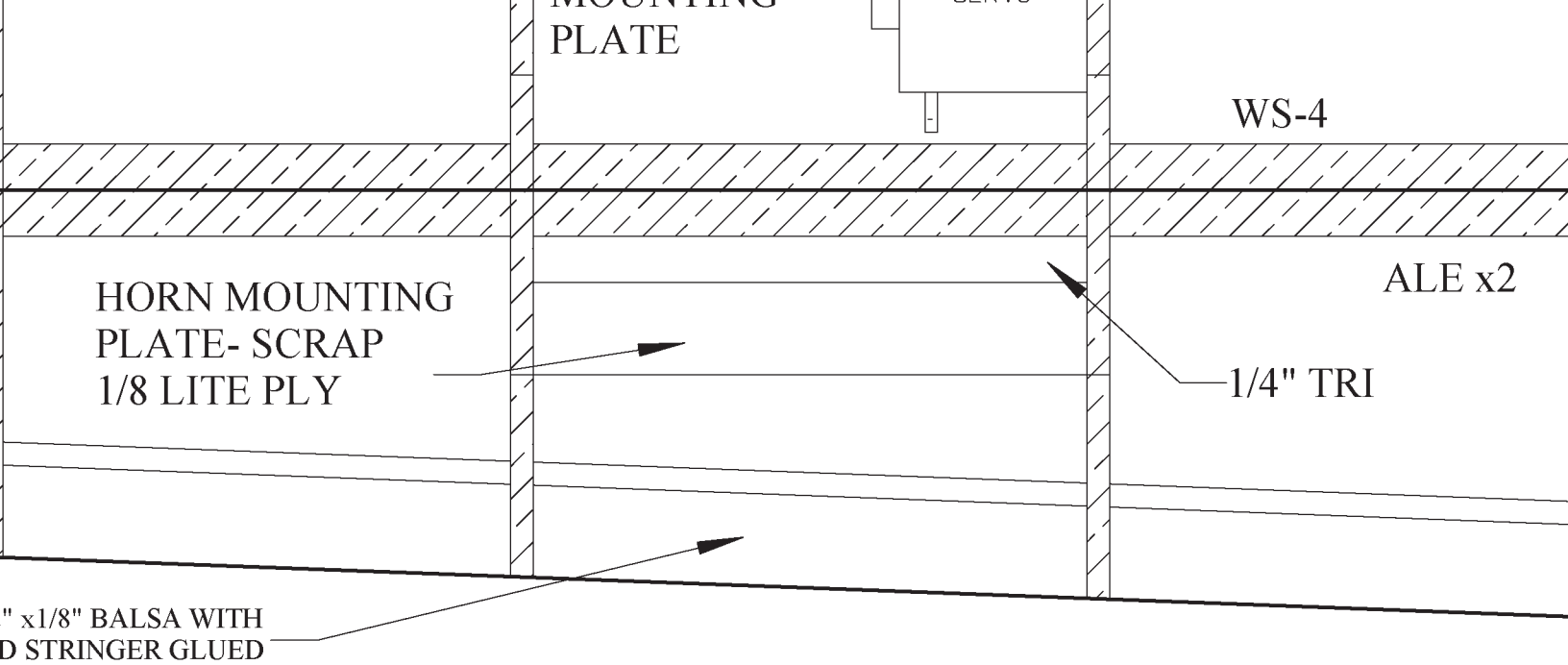
HOLE FOR  
10-24 BOLT

G-3

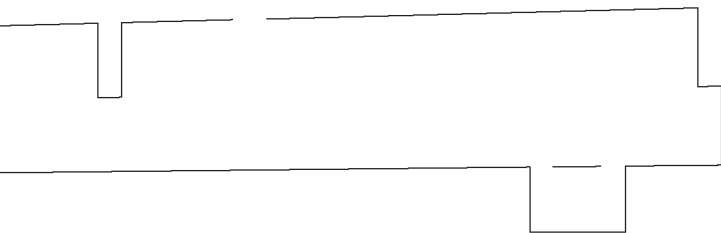
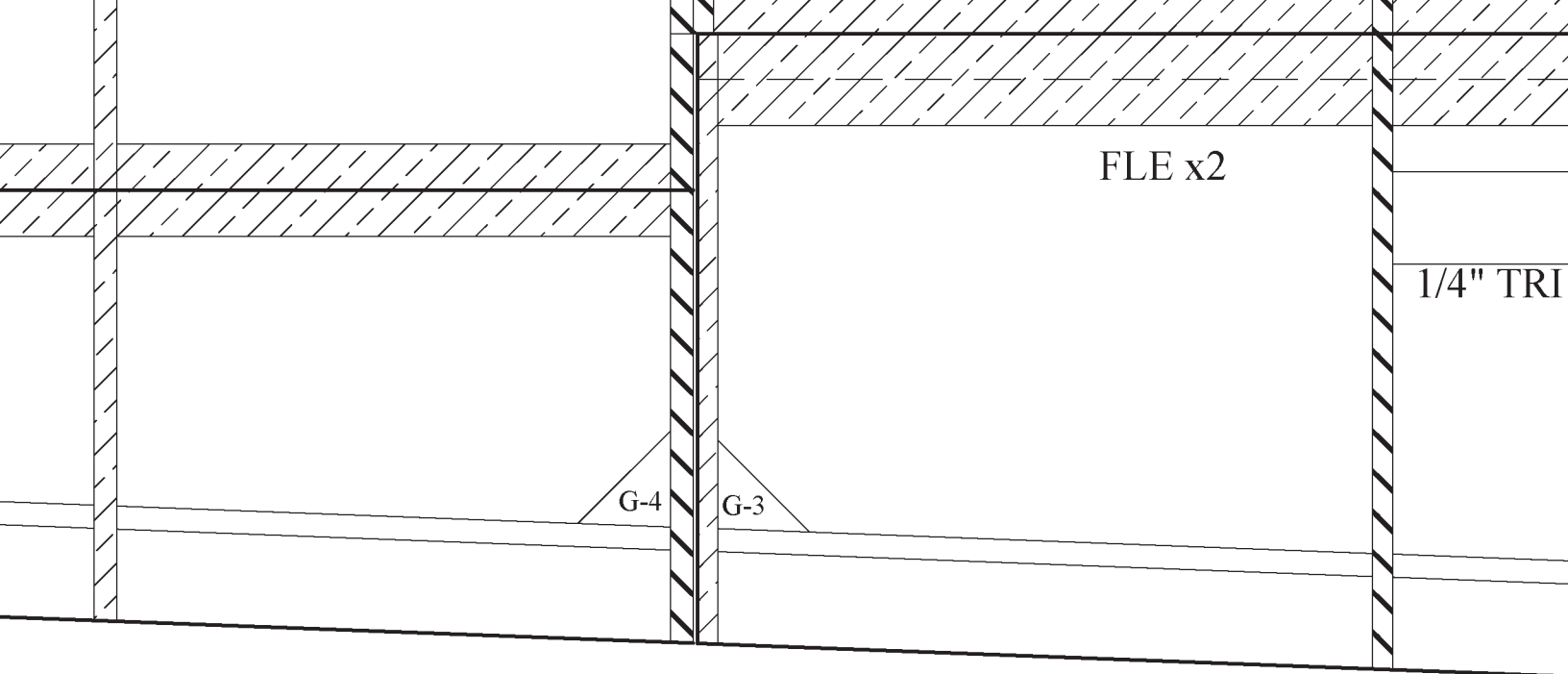
TRAILING EDGE- 1/2"  
1/8" SQR. BASSWOOD  
TO LEADING EDGE



WING HAS 1  
ADD 1\* ADD



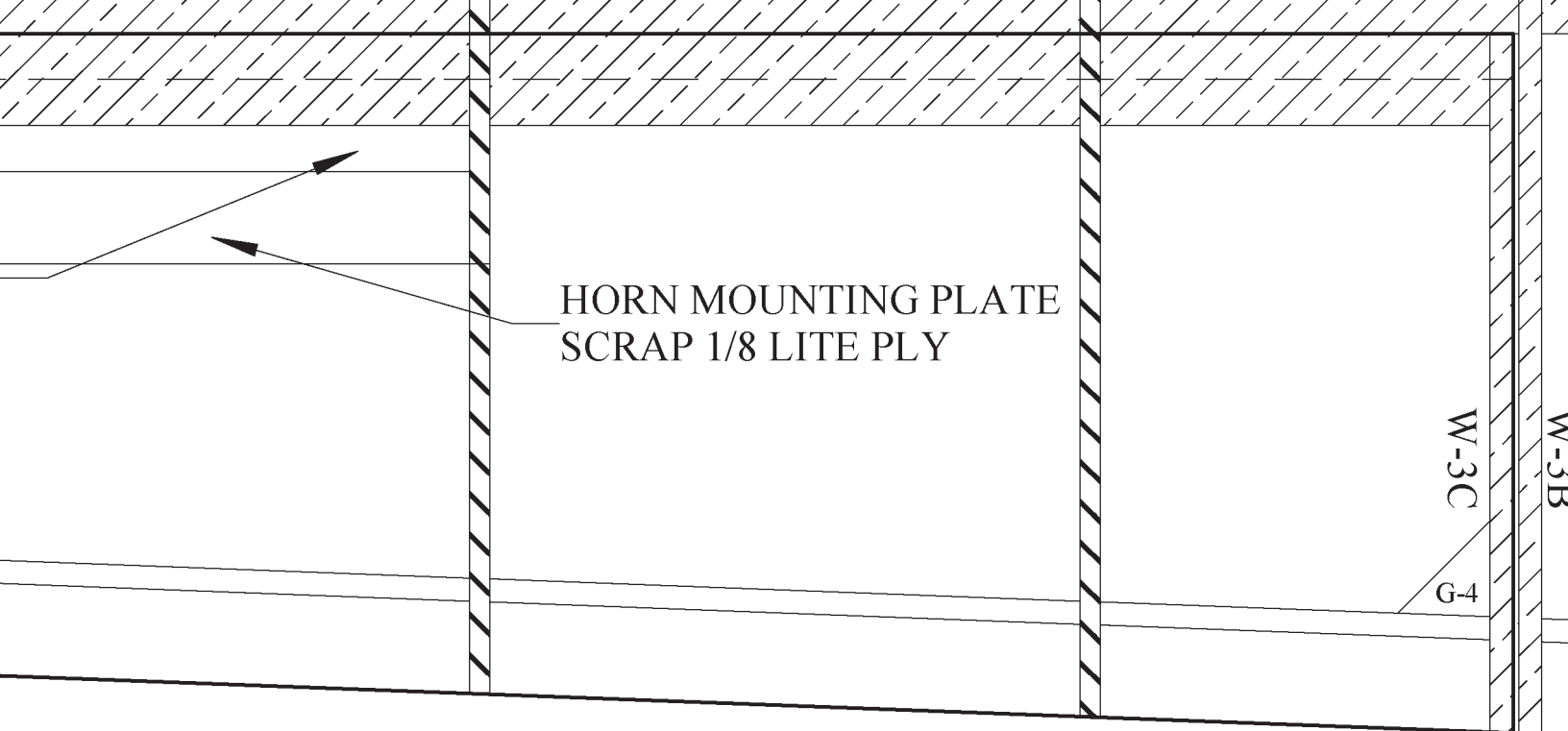
NO WASHOUT- IF YOU WISH TO  
D 1/16\" SHIM UNDER THIS TAB



# WING- BUILD

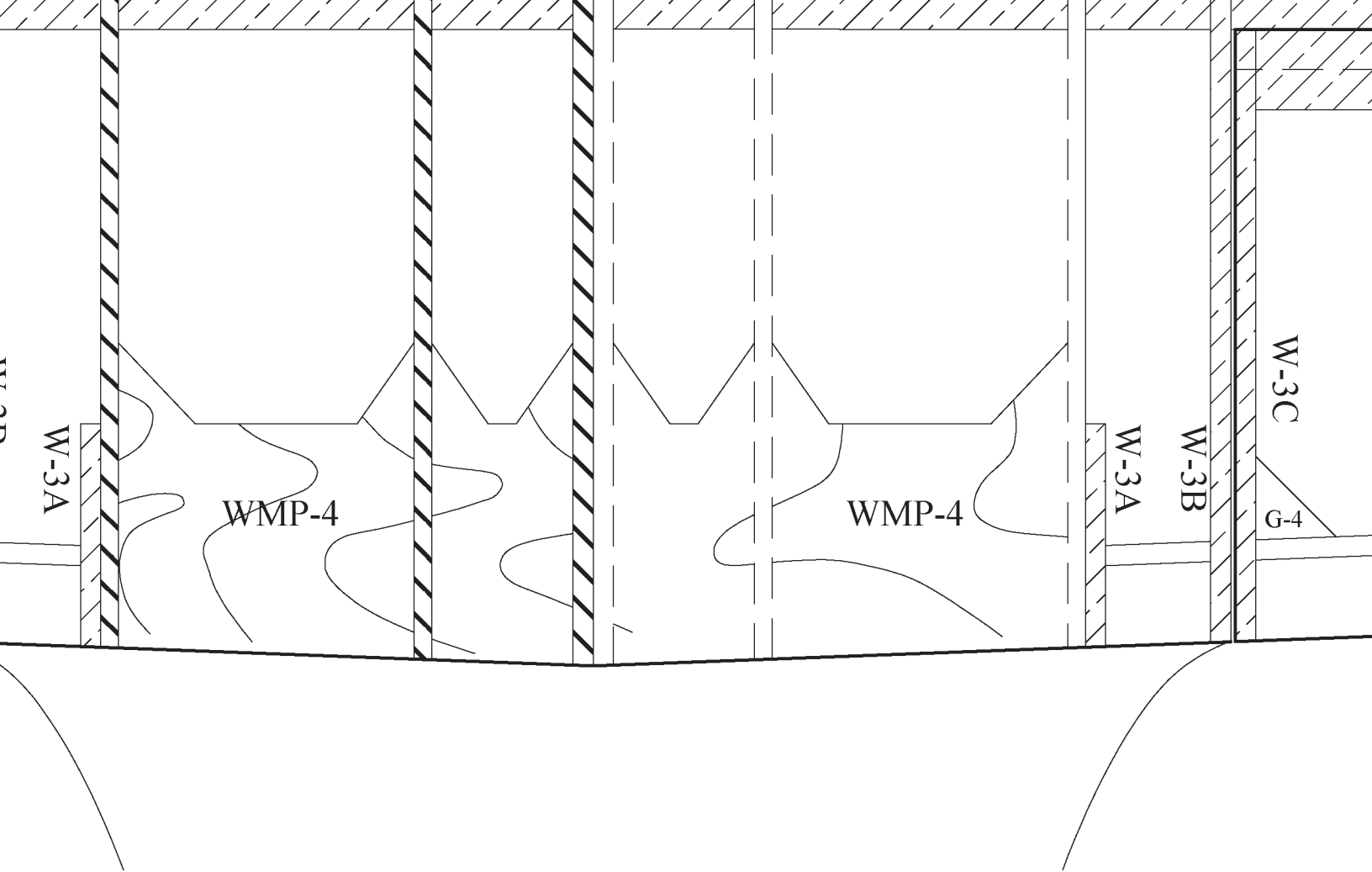
## WING BUILDING ORDER

1. BUILD LEFT HALF FIRST; FLAT C
2. ADD WS-2, FLE, WS-4, AND ALE M  
CUT TO SHAPE- SAND SUB LE TO
3. UNPIN LEFT WING PANEL AND E
4. REMOVE WING FROM BOARD A

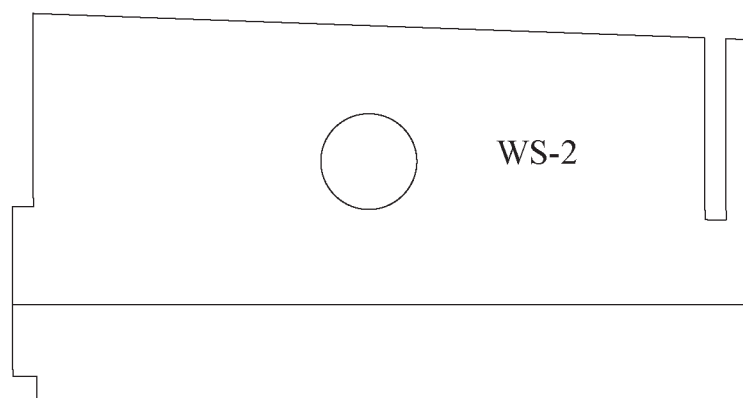
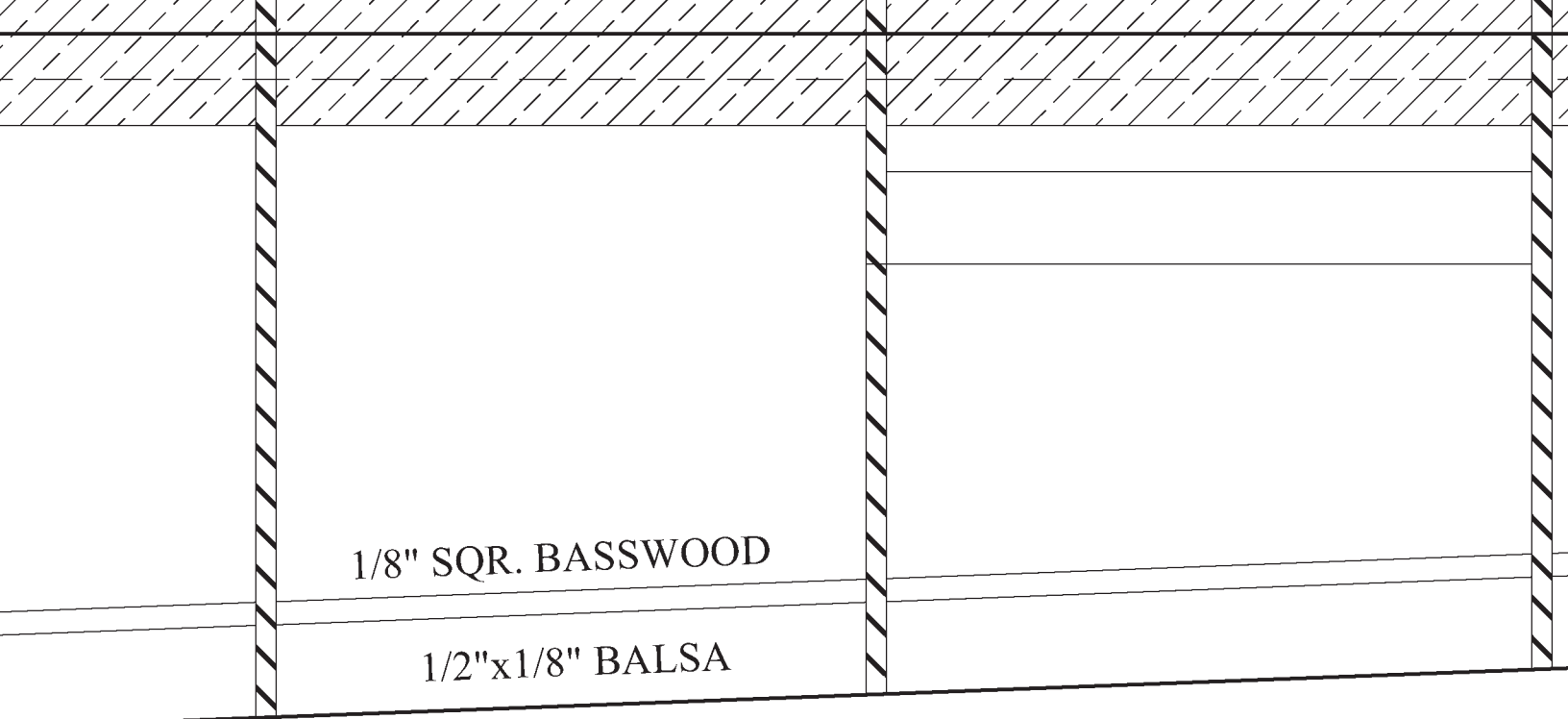


# BUILD THIRD

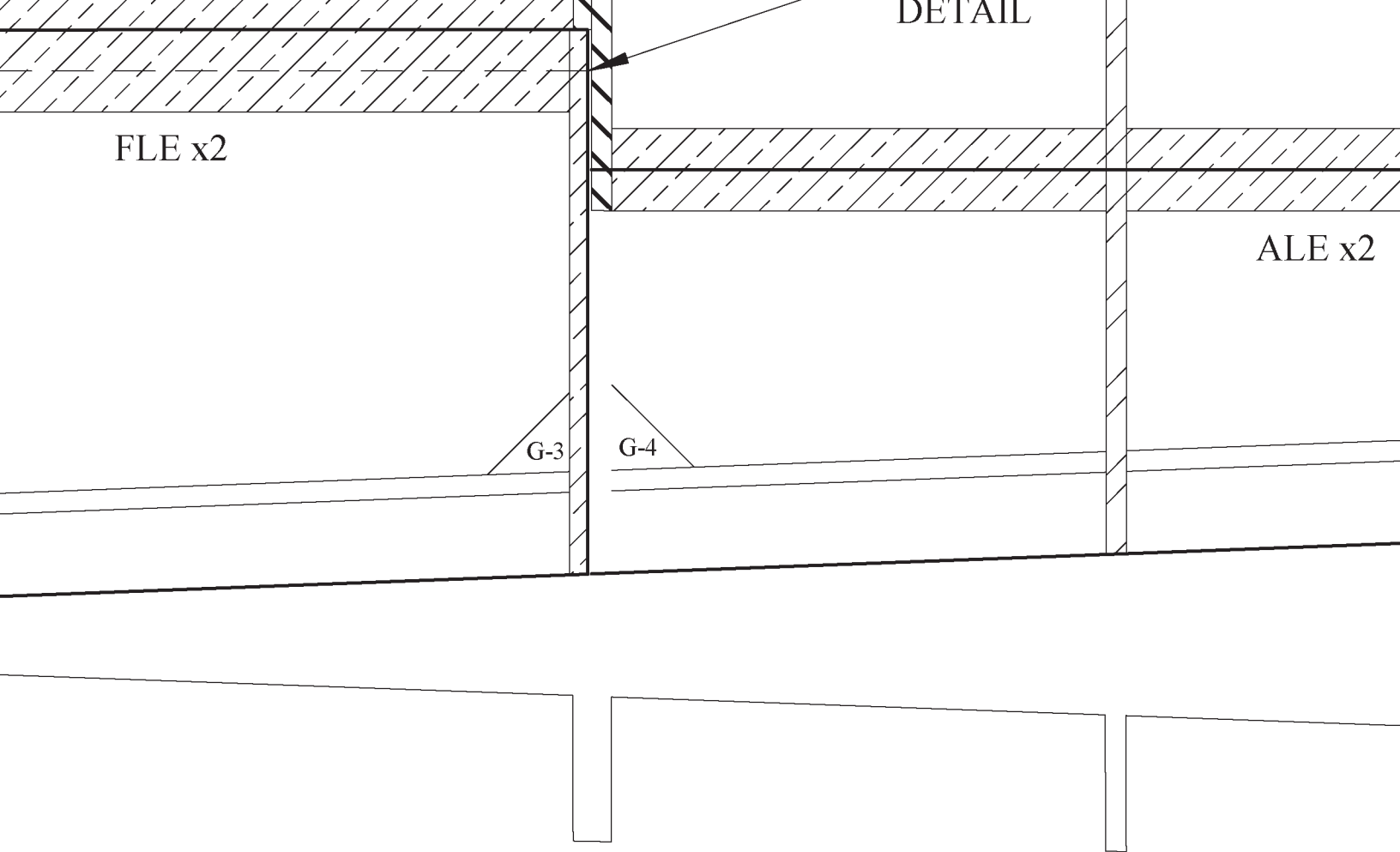
ON THE BOARD- WS-1 AND WS-3 WILL BE ELEVATED ABOVE THE TABLE  
IN PLACE. SLIDE W-1 (x2) IN PLACE ALONG WITH THE REMAINING RIBS. SUB LE  
TOP/BOTTOM TO MATCH RIBS. ADD WLE, WMP PARTS, REMAINING STRINGERS, A  
ELEVATE TIP SO THAT RIGHT SIDE OF WS-1 AND WS-3 IS FLAT ON THE BOARD.  
ND SHEET BOTTOM, ADD WING TIPS, WLE-1, AND TRIANGLE STOCK LEADING F



LEADING EDGE IS FROM 1/8" Balsa  
AND TRAILING EDGE. SHEET WING PER THE PLANS WITH 1/16" Balsa (TOP ONLY)  
REPEAT SAME AS THE LEFT  
EDGE- SHAPE PER THE PLANS/TEMPLATES.



LY).



DETAIL

FLE x2

ALE x2

G-3

G-4

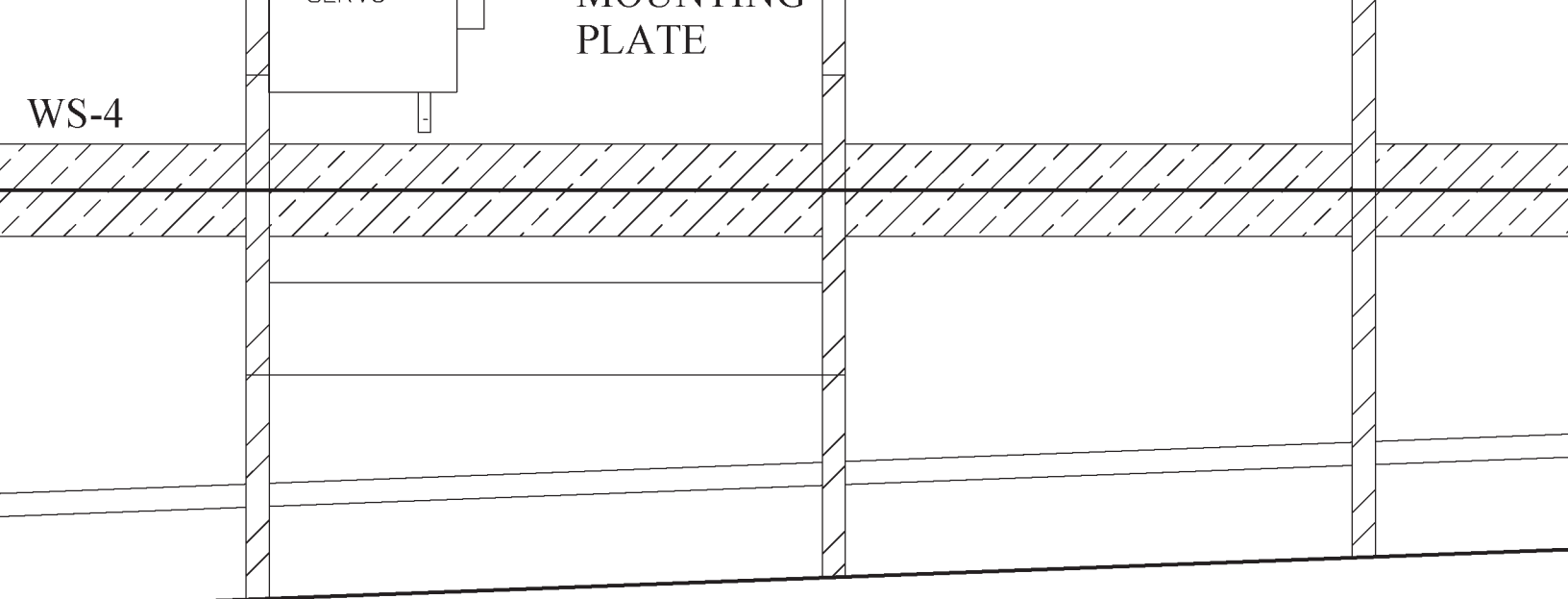
1/8" x 1/2" BASSWOOD PL

GLUE PLANK TO BOTTOM OF WS-2

WS-4

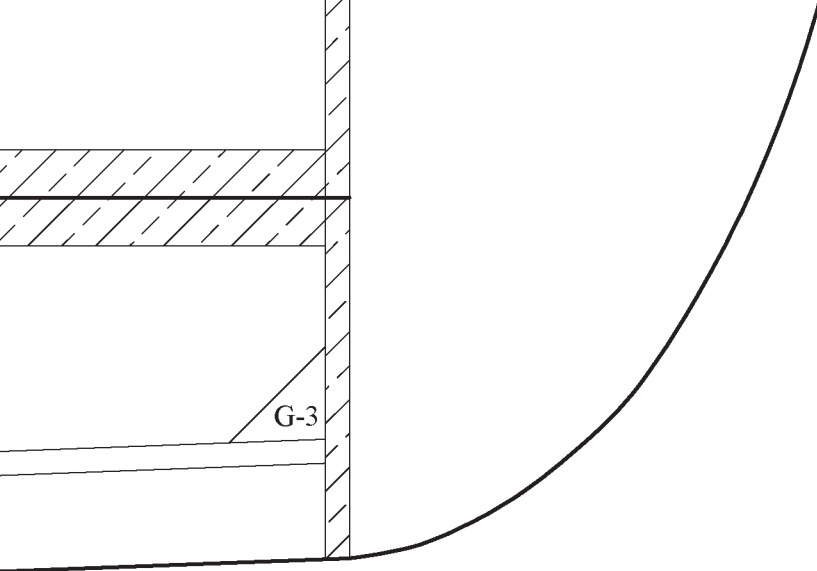
SENS

MOUNTING  
PLATE



ANK





# Do-335

DESIGNED BY DEREK MICKO

Sheet 2 of 3

Plan No. 1122

Copyright 2020  and **ModelAviation**  
ACADEMY OF MODEL AERONAUTICS  
Bringing Modelers Together

Copying for resale of this drawing without  
the written approval or consent of AMA  
is expressly prohibited.